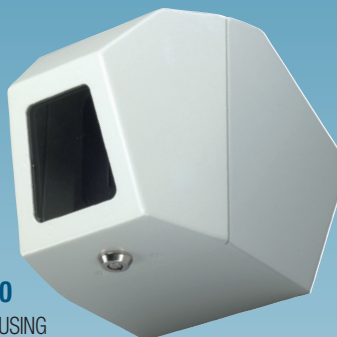




AMS90
CORNER HOUSING



ACEM20C
INDOOR HOUSING



AMS180
WALL HOUSING



ACE20
WEDGE HOUSING

Vandal Resistant Indoor Housings

ACE20, ACEM20, AMS90, AMS180

Moog offers an array of indoor vandal resistant housings. No matter what the application Moog has the solution for any surface be it wall or ceiling. Designed to house a solid-state camera unit in a compact casing these discrete housings are ideal for environments where a higher level of security is needed.

Features

- Easy-to-replace Window Guard™ paint shield allows vandalized viewing window to be quickly and economically restored to clarity

ACE20

- Easy installation to any type of ceiling
- Fully adjustable camera bracket for top or bottom mounting
- Right-angle BNC connector included for longer length cameras

ACEM20

- Easy installation to any type of ceiling
- Optional 24Vac heater / thermostat for protected outdoor applications and for defogging the window

AMS90 / AMS180

- Mounting hardware fully contained within unit to guard against tampering
- Can be mounted with top against ceiling, while still permitting hinged lid to open for full access to the unit
- Rugged, 14-gauge cold-rolled steel construction with welded seams



Vandal Resistant Housings

Rugged, Vandal Resistant Housings:

ACE20

Indoor Surface Mount Wedge: An off-white polycarbonate ceiling wedge housing with clear viewing window

ACE20T

Indoor Surface Mount Wedge: An off-white polycarbonate ceiling wedge housing with tinted viewing window

ACEM20C

Indoor Steel, Surface Mount: An off-white powder coat 14-gauge steel ceiling wedge housing with clear 3/16" polycarbonate window with Window Guard™ paint shield

ACEM20CTH

Outdoor Steel, Surface Mount: ACEM20C with 24Vac heater / thermostat

AMS90CT

Indoor Corner Mount: An off-white powder coated vandal resistant construction; 14-gauge steel housing for corner mount with barrel / cam lock, clear .22" thick Lexan® viewing window, and Window Guard™ paint shields. The housing includes an adjustable bracket for fixed camera. MCL 8" (Maximum Camera Length)

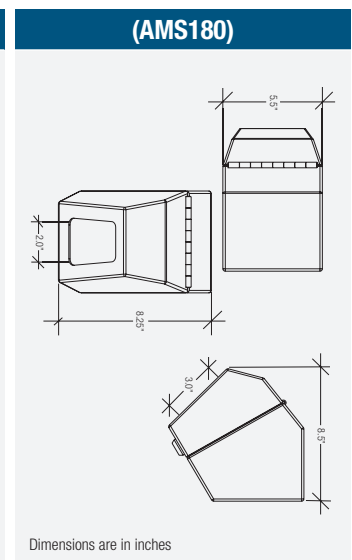
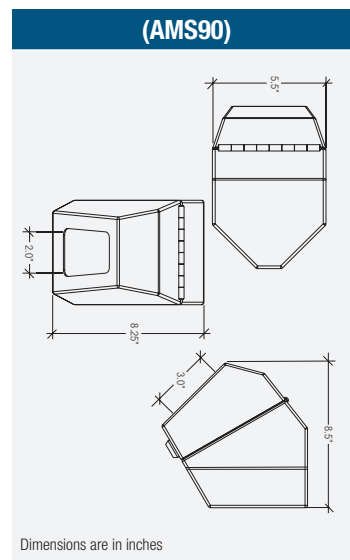
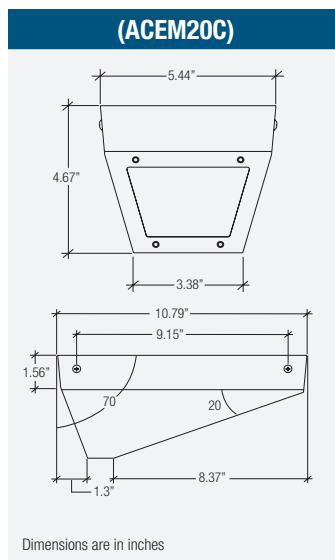
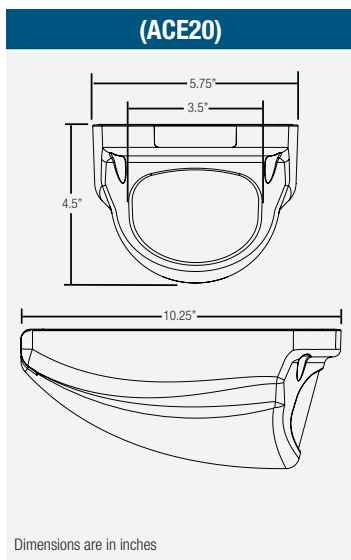
AMS180CT

Wall Mount: An off-white powdercoated vandal resistant construction; 14-gauge steel housing for wall mount with barrel / cam lock, clear .22" thick Lexan® viewing window, and Window Guard™ paint shields. The housing includes bracket for fixed camera. MCL 8"

Engineering Specifications	
ACE20 / ACE20T:	The body of the ACE20 housing is constructed from high-impact off-white polycarbonate, and contains a clear polycarbonate viewing window. The base plate is polycarbonate, and contains three conduit knockouts on the bottom section for control and video cable. The housing cover has been attached to the base plate, and secured with two tamper-resistant fasteners.
ACEM20C / ACEM20CTH:	The body of the housing is constructed of 14-gauge steel, off-white powder coat, and contain a clear 3/16" polycarbonate window. An easy-to-replace Window Guard™ paint shield allows clarity of viewing window to be quickly and economically restored in case of vandalism. The base plate is a 18-gauge steel, and contains three conduit knockouts on the bottom section and a 7/8" hole on the rear of the base plate for control and video cable. The housing cover is secured to the base plate with four stainless steel 8 x 32 security screws. An optional 24Vac heater / thermostat is available for protected outdoor applications and for defogging the window.
AMS90CT / AMS180CT:	The maximum security AMS180 and AMS90 measures (HxWxD) 8.25" x 5.5" x 8.5". It's constructed of 14-gauge, cold-rolled steel and finished in an off-white powder coat. A (WxH) 2"x 3" opening for viewing is covered by a .22" thick, clear, high-impact Lexan® viewing window with no light reduction. An easy-to-replace Window Guard™ paint shield that allows clarity of viewing window to be quickly and economically restored in case of vandalism. The hinged lid can open fully, even when unit is mounted with top in contact with ceiling. The unit comes with an adjustable camera bracket and barrel / cam lock. An optional 24Vac heater allows the unit to be used in protected outdoor applications.

Camera Size (ACE20 / ACE20T)	
Camera / lens combinations are based on various cameras fitted with a 4mm fixed lens (Computar TG0412FCS-3) with a lens length of 1 1/4" and a 3.5-8mm varifocal lens (Computar TG223514F- CS-2) with a lens length of 1 3/4"	
JVC:	(TK-S241V) with 4mm fixed and 3.5-8mm varifocal lens
Panasonic:	(WV-BP134, WV-CP234, WV-CP454) Color CCTV with 4mm fixed and 3.5-8mm varifocal lens
Philips:	LTC (0350/21) with 4mm fixed and 3.5-8mm varifocal lens
Sanyo:	(VCC-4324) Day / Night Color CCD with 4mm fixed and 3.5-8mm varifocal lens
Sony:	(SPT-M124 Black & White) with 4mm fixed and 3.5-8mm varifocal lens (SSC-C104 Color) with 4mm fixed
Toshiba:	CCD (IK-527A) with 4mm fixed lens and 3.5-8mm varifocal lens
Other cameras that meet these length requirements may also be used	

Electrical Specifications (ACEM20C)	
Power Source:	24Vac, 50/60 Hz
Heater:	24Vac, 25VA, 1.04 Amps



MOOG

Sensor and Surveillance Systems

3650 Woodhead Drive Northbrook, IL, USA 60062

+1.847.498.0700 Fax: +1.847.498.1258 www.moogS3.com