



Small Business Network Switches

You need a simple, secure, and reliable network. You need high-performance, easy-to-manage switches that simplify your network.

Build a DIY office network

[Cloud-Managed](#)[Premise-Based](#)[Managed & Unmanaged](#)[Services](#)[Support](#)[For Partners](#)[Let Us Help](#)

Network switches

Which switch is right for your needs? Explore these options, or [read more about switch types](#).

Cloud-managed

Do you have a lean IT staff? A cloud-managed switch can simplify your network management. You get a simple user interface, multisite full-stack management, and automatic updates delivered directly to the switch.

Premise-based

Would you rather own your switch outright than subscribe to a cloud solution? Go with a premise-based switch. It's also a good option if your compliance regulations bar cloud applications, or if your network experts prefer customized device management.

Managed and unmanaged

Do you need tighter control of your network traffic? A managed switch gives you the ability to configure and monitor your LAN. If you want to connect multiple networks, you want a managed switch with Layer 2 or Layer 3 capabilities.

Cloud-managed switches



Meraki MS120-8 Switches

Cloud-managed, compact switch with integrated mounting.

[Specifications](#)

[Compare models](#)



Meraki MS120 Switches

Cloud-managed switch with multiple power options.

[Specifications](#)

[Compare models](#)

Premise-based switches



Meraki MS250 Switches

Next-generation switch at a great value. Meraki MS250 compatible.

Specifications

Data sheet

Compare models

Infographic



Managed and unmanaged switches



110 Series Unmanaged Switches

Delivers fast Ethernet and gigabit switching.

[Data sheet](#)

[Compare models](#)



250 Series Smart Switches

Solid business network switch with a suite of features at a great value.

[Data sheets](#)

[Compare models](#)



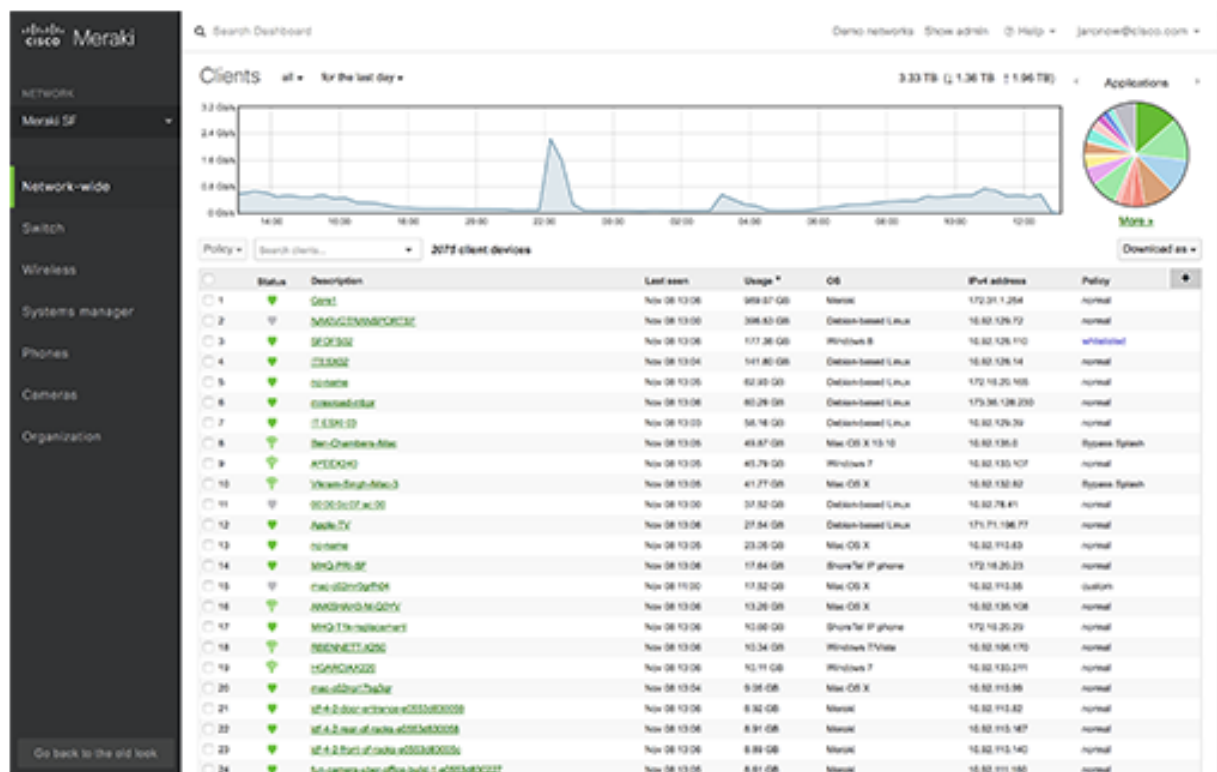
Network switch promotions



100% cloud-managed switches

Get true zero-touch cloud provisioning, network visibility, and remote troubleshooting for deployments of any size.

Try Meraki for free



Manage your network from a central dashboard

Survey the health of your network, monitor network connections, view path and security status, roll out new network policies, schedule and automate maintenance.

550X Series Stackable Managed Switches

Start your demo

Stacking capability to support up to 8 units and 400 ports in a single stack.

Data sheets

Compare models

Recommended for you



Meraki MS225 24-port switch

Most small businesses buy this switch because of the built-in multisite management and zero-touch provisioning capabilities.

Explore the Meraki MS225

Services

Support Essentials for Catalyst switches

Vital technical support to keep your network up and running.

Data sheet

FAQ

Meraki RMA Only Service

Full unit replacement and optional onsite resources.

Smart Net Total Care

Access to technical experts 24 hours a day, 365 days a year.

Data sheet

At-a-Glance

Small business network resources



Networking basics for your small business.

GUIDE

Support



- [Contacts](#)
- [Feedback](#)
- [Terms & Conditions](#)
- [Privacy](#)
- [Cookies](#)
- [Trademarks](#)



Building a small office network.

VIDEO



Warranties for switches (Video - 0:36 min).