

STANDARD MONOCHROME RIBBONS

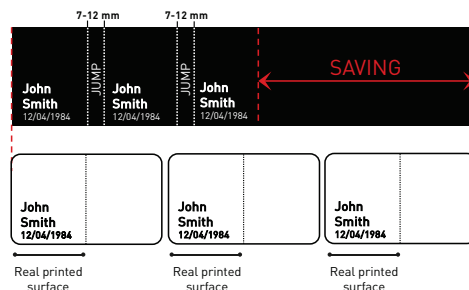
Cost-Effective Solution



The Evolis High Trust® standard monochrome ribbons are specifically engineered to provide optimal printing quality. Available in Black, Blue, Red, Green, White, Metallic Gold and Metallic Silver, they are used to print a single color on cards.

ADVANTAGES

Monochrome ribbons are very cost effective for personalizing pre-printed cards or for issuing single-color cards. Thanks to the ribbon saver feature, available with continuous ribbons, you significantly increase the number of cards to be printed with one single ribbon. Indeed, the surface used on the ribbon corresponds to the real printed surface plus a 7 mm (0.27") jump, and not the surface of a whole card.



Tested and validated by Evolis R&D and Quality departments, these consumables bring you printing quality and reliability. Use Evolis High Trust® ribbons to keep off defects and to benefit from high-quality printouts at an optimal cost-per-card.

GENERAL SPECIFICATIONS

- Ribbon in PET with thin layer of specialized coatings
- Continuous ribbon
- Compatible with PVC or composite cards
- For thermal transfer technology

RIBBON	COLOR (RGB)	PANTONE
Blue	0/103/195	P300C
Red	210/16/52	P186C
Green	0/114/41	P356C
Black	0/0/0	*
White	255/255/255	*
Metallic Gold	220/170/0	P110C**
Metallic Silver	138/141/143	P877C**

* No Pantone for Black and White

** Approximative Pantone for Gold and Silver

PRODUCT INFORMATION:

- Monochrome ribbon
- Continuous
- Ribbon Saver
- Black, White, Blue, Green, Red, Metallic Silver and Metallic Gold



COMPATIBILITY AND CAPACITY

PART#	COLOR	PRINTS / ROLL	BADGY 200	ZENIUS/ PRIMACY	PRIMACY2	EDIKIO ACCESS	EDIKIO FLEX/ DUPLEX	RFID Syst.
RCT223NAAA	Black	2000			•			•
NCT223NAAA	Black	2000			•			•
RCT212NAAA	Blue	1000			•			•
RCT213NAAA	Red	1000			•			•
RCT214NAAA	Green	1000			•			•
RCT215NAAA	White	1000			•			•
RCT216NAAA	Metallic Gold	1000			•			•
RCT217NAAA	Metallic Silver	1000			•			•
RCT023NAA	Black	2000		•			•	•
RCT012NAA	Blue	1000		•			•	•
RCT013NAA	Red	1000		•			•	•
RCT014NAA	Green	1000		•			•	•
RCT015NAA	White	1000		•			•	•
RCT016NAA	Metallic Gold	1000		•			•	•
RCT017NAA	Metallic Silver	1000		•			•	•
RCT025NAA	Black	500				•		•
RCT052NAA	White	500				•		•
CBGR0500K	Black	500	•					•

PART#	COLOR	PRINTS / ROLL	TATTOO	PEBBLE / DUALYS	SECURION	QUANTUM
R2211	Black	600	•			
R2011	Black	1000		•	•	
R2131	Black	3000				•
R2121	Black	5000				Quantum1 only
R2212	Blue	600	•			
R2012	Blue	1000		•	•	•
R2013	Red	1000		•	•	•
R2014	Green	1000		•	•	•
R2215	White	500	•			
R2015	White	1000		•	•	•
R2016	Metallic Gold	1000		•	•	•
R2217	Metallic Silver	500	•			
R2017	Metallic Silver	1000		•	•	•

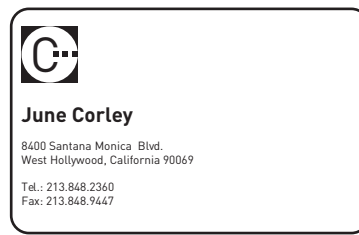


PRINTING CAPACITIES

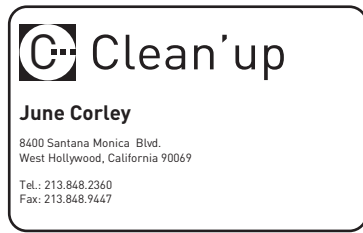
Most of the Evolis monochrome ribbons are given for an average of 1,000 prints per roll. However, depending on the layout, the ribbon achieves a different number of prints, as demonstrated hereafter:



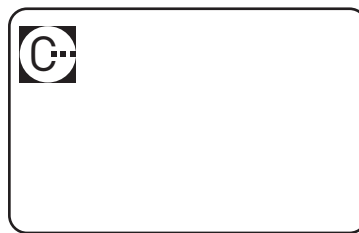
CR80 card 100% layout = 894 cards/roll*



CR80 card 50% layout = 1,625 cards/roll*



CR80 card 80% layout = 1,000 cards/roll*



CR80 card 25% layout = 2,748 cards/roll*



120mm card 80% layout = 787 cards/roll*



150mm card 80% layout = 644 cards/roll*

* Example based on a 1,000 prints per roll ribbon

RFID SYSTEM

The RFID system allows the automatic ribbon recognition by the printer (improved user friendliness).

EASY4PRO RANGE

The EASY4PRO line consists of the removal of ribbon cassette. The Evolis Easy4pro ribbons are designed for card printing professionals with high ribbon consumption who require compact consumables with a small footprint packaging.

Downsized to minimum dimensions, the Easy4pro ribbons feature an optimized soft packaging:

- This helps to reduce shipping and storage cost for large-volume users
- This also helps to reduce plastic consumption and waste (no cassette, no blister).

These ribbons benefit from the same high level of quality as the standard Primacy consumable range and produce sharp, bright images and clear text.

STORAGE INFORMATION

These ribbons shall be capable of functioning for up to 1 year after purchase if stored in a cool, dry environment and having remained unopened from the original packaging. Temperature of storage must be between 5-25°C (41 - 77°F) and at RH between 30-80%. Once opened these ribbons shall have a lifetime of 6 months if stored under cool, dry conditions. For all these ribbons, avoid dust, direct sunlight, high humidity and high temperatures. Do not place near solvent or other chemicals.

evolIS

Evolis - 14 avenue de la Fontaine - Z.I. Angers-Beaucouzé 49070 Beaucouzé - France
T +33 (0) 241 367 606 - F +33 (0) 241 367 612 - info@evolIS.com

www.evolis.com