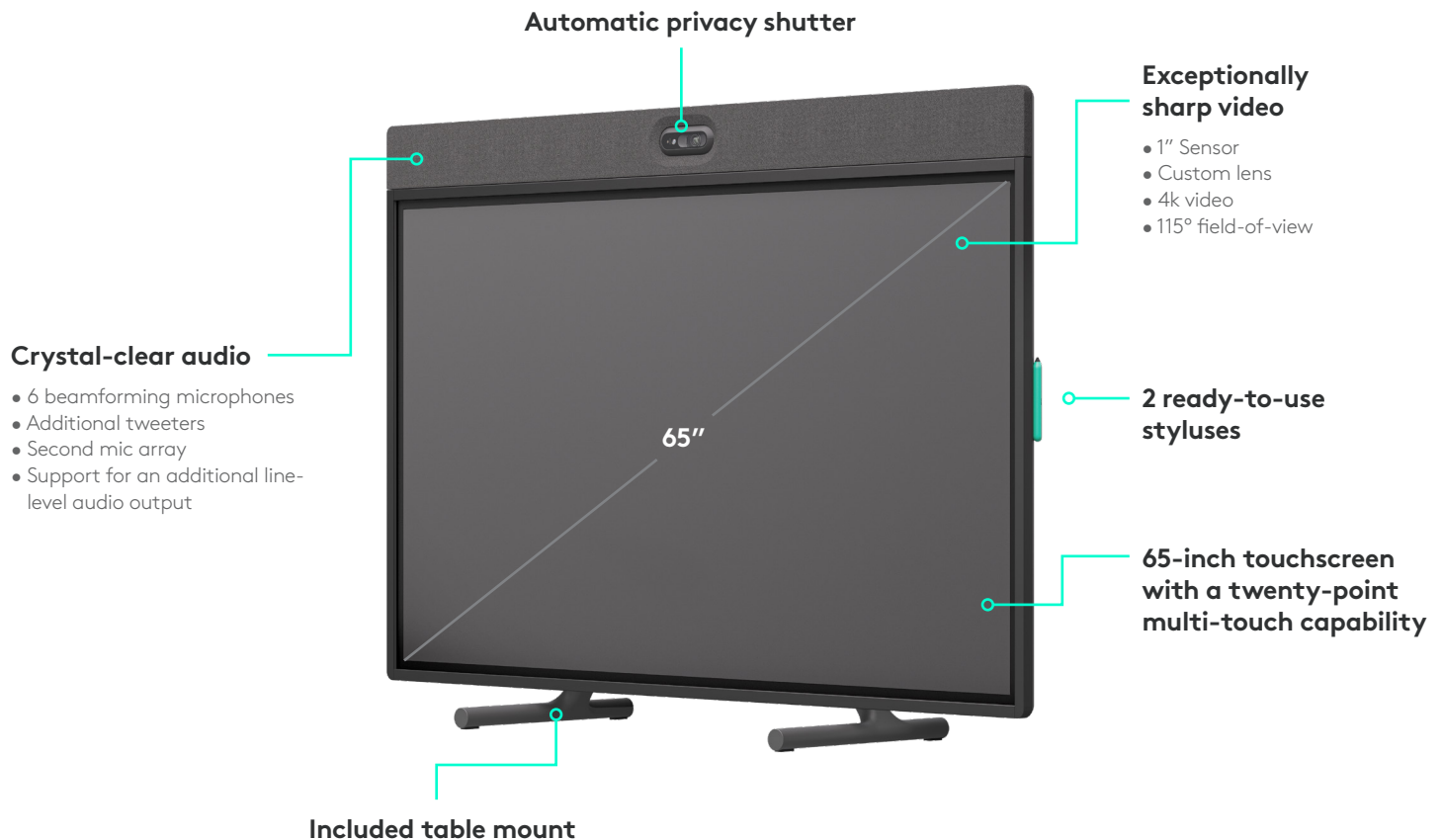


Rally Board 65

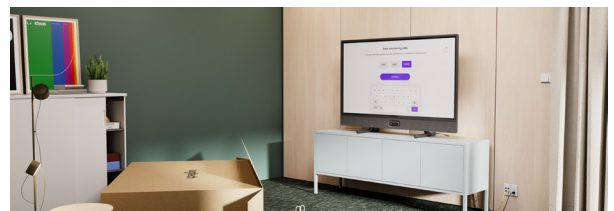
Collaboration made simple. Experience all-in-one video conferencing that integrates crystal clear video, powerful audio, and AI-driven features, all integrated into a single 65-inch touchscreen. Set it up in just a few simple steps with minimal need for onsite IT support.



What makes Rally Board 65 different?

Set up in minutes

Set up right out of the box in just a few steps and minimize the need for onsite IT support. Included mounts and remote configuration mean you can get Rally Board 65 up and running in minutes.



Everyone is seen and heard in open spaces and meeting rooms

AI-driven video and audio technologies — RightSight 2 and RightSound 2 — ensure optimal framing and clear sound for every participant. Depth Blur, a new feature coming soon, helps eliminate distractions by defining an area of focus in open spaces and blurring areas beyond it.

3 ways to mount and 2 ways to orient



Credenza

Mount Rally Board 65 on a table or credenza with included legs.



Wall

Easily mount Rally Board 65 on a wall with a standard VESA mount.



Cart

Mount Rally Board 65 on a cart and move it anywhere it's needed.



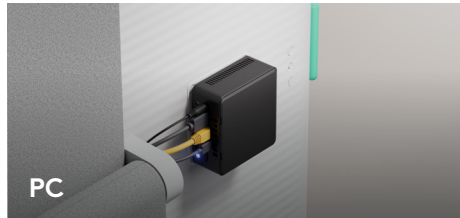
Built for flexibility

Rally Board 65 is designed for the way you meet. It can be deployed with the camera positioned above or below the screen, ensuring all participants maintain natural eye contact in any space.

3 ways to deploy



Android



PC



BYOD + single cable BYOD

Sustainability

Save power when not in use

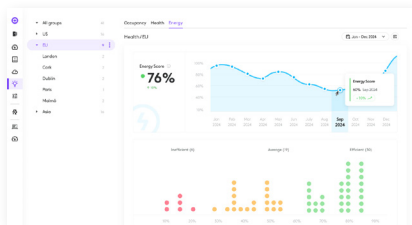
The precision radar sensor embedded in Rally Board 65 detects the presence or absence of people and enables the device to go into deeper sleep states to decrease its power usage when no one is in the space.



Next Life Plastics

The plastic parts in Rally Board 65 include up to 41%* post-consumer recycled plastic to give a second life to end-of-life plastic from old consumer electronics and help reduce our carbon footprint.

* Graphite: 41%, Off-white: 27%



Make smarter decisions with Insights*

Thanks to the built-in environmental sensors, you can see energy, occupancy, and environmental data over time to make informed decisions about how to evolve and change your spaces. Get recommendations on how to make meeting rooms and open spaces more productive work environments.

* Insights requires a service license.



www.logitech.com/RallyBoard65

Contact your reseller
or contact us at
www.logitech.com/business

© 2024 LOGITECH, the LOGITECH logo, the Logi logo, the NEXT LIFE PLASTICS logo, and the RECYCLED PLASTIC logo are trademarks or registered trademarks of Logitech Europe S.A. and/or its affiliates in the U.S. and other countries. All other trademarks are the property of their respective owners.

Published March 2025