



**Epson® quality, reliability and permanent PrecisionCore® printhead.
ZPL II compatibility and robust remote management tools.
Epson industry-leading print quality on demand.**

Learn how to sell the
Epson ColorWorks solution.

CONTENTS

- ColorWorks product lineup
 - Target markets
 - Selling the value of color labels
 - Label media guidance
 - Software compatibility
 - Label samples
 - Label cost estimator
 - Spec sheets
 - Competitive comparisons
 - TCO calculation tool
 - Warranty and service offerings
 - Distributors
 - Price list
 - Advantage of selling color
-

Epson ColorWorks Printer Lineup



Attribute	C6000A	C6000P	C6500A	C6500P
MSRP	\$2,580	\$3,050	\$3,500	\$3,980
Print speed* (inches per second)	5	5	5	5
Print width maximum	4.25"	4.25"	8.34"	8.34"
Paper width min – max	1" – 4.4"	1" – 4.4"	1" – 8.5"	1" – 8.5"
Resolution	1200 x 1200	1200 x 1200	1200 x 1200	1200 x 1200
BS5609**	Yes	Yes	Yes	Yes
Internal media support	8" roll	8" roll	6" roll	6" roll
Rear media feed support	Ext. roll & fanfold	Ext. roll & fanfold	Ext. roll & fanfold	Ext. roll & fanfold
Time to first print	Near instant	Near instant	Near instant	Near instant
Ink set	Matte or Gloss	Matte or Gloss	Matte or Gloss	Matte or Gloss
I/O control	Yes	Yes	Yes	Yes
Peeler	No	Yes	No	Yes

* Printing in Max Speed Mode, 300 x 600 dpi, 3.6" (92 mm) print width. | ** ColorWorks CW-C6000/C6500 inkjet printers with UltraChrome® DL pigment ink, used in combination with Avery Dennison Fasson® 3.5M Matte WH Syn Paper WBIJS4600/50#SCK (Spec 79724), has been BS 5609 certified. Fasson® is a registered trademark of Avery Dennison Corporation.

Epson ColorWorks Printer Lineup (continued)



Attribute	C7500G	C7500	C3500
MSRP	\$8,819	\$8,819	\$1,919
Print speed* (inches per second)	11.8	11.8	3.3
Print width maximum	4.25"	4.25"	4.1"
Paper width min – max	2" – 4.4"	2" – 4.4"	1.2" – 4.25"
Resolution	1200 x 600	1200 x 600	720 x 360
BS5609**	Yes	Yes	Yes
Internal media support	8" roll	8" roll	4" roll
Rear media feed support	Ext. roll & fanfold	Ext. roll & fanfold	Ext. roll & fanfold
Time to first print	10-15 seconds	10-15 seconds	Near instant
Ink set	Gloss	Matte	Matte / Gloss
I/O control	Yes	Yes	No
Peeler	No	No	No

* Printing in Max Speed Mode, 300 x 600 dpi, 3.6" (92 mm) print width. | ** ColorWorks CW-C6000/C6500 inkjet printers with UltraChrome® DL pigment ink, used in combination with Avery Dennison Fasson® 3.5M Matte WH Syn Paper WBIJS4600/50#SCK (Spec 79724), has been BS 5609 certified. Fasson® is a registered trademark of Avery Dennison Corporation.

POTENTIAL TARGET MARKETS

Chemical Industry

Companies that must comply with hazard communication standards/GHS

- Government mandated red pictograms make traditional monochrome printing a challenge
- Pictograms vary from label to label



What is GHS?

- Worker safety initiative to provide chemical handlers with hazard information
- Single international hazard warning communication using standardized color pictograms

Amalia Chemicals, Inc.
2001 Norton Road • Charlotte, NC 28207

Batch or Lot Number
PO #: 123456789abc
DOM: 12/31/2017

Mix Date (KMF) 09/31/2017
DDP: 10/31/2017
Shelf Life: 12/31/2019

Mix Ratio Volume: Base/Act/Thinner: 3 : 1 : NA
Mixing instructions / thawing instructions: Shake base component CA 8222/F24098 for 10 minutes. Slowly add one volume of activator component CA 8200B to three volumes of base component CA 8222/F24098. Mix to uniformity.

Voc: Meets scqmd rule 1124 coating voc less exempt per rule 1124
BASE COMPONENT: 457 GM/L
MIXED AS APPLIED: 420 GM/L
MAX MATERIAL VOC PER RULE 443.1 (g)
BASE COMPONENT: 457 GM/L
MIXED AS APPLIED: 420 GM/L MAX

R 3.2 Printed 7/12/17 2:15pm
1 of 50 - UN 1203

Coatings Polyurethane High Solids
CA8222/F24098 - 10695FW2034MPY22K

EINECS-203-446-6 Type I Class H Grade 1

Hazard statement:

- Highly flammable liquid and vapor.
- Harmful if swallowed.
- Causes serious eye damage.
- Causes skin irritation.
- May cause cancer.
- May cause respiratory irritation.
- May cause drowsiness and dizziness
- May cause damage to organs through prolonged or repeated exposure. Toxic to aquatic life with long lasting effects.
- See MSDS and TDS for additional information.

Precautionary statements Prevention: Obtain special instructions before use. Do not handle until all safety precautions have been read and understood. Use personal protective equipment as required. Wear protective gloves. Wear eye or face protection. Keep away from heat, sparks, open flames and hot surfaces. No smoking. Use explosion-proof electrical, ventilating, lighting and all material-handling equipment. Use only non-sparking tools. Take precautionary measures against static discharge. Keep container tightly closed. Use only outdoors or in a well-ventilated area. Avoid release to the environment. Do not breathe vapor. Do not eat, drink or smoke when using this product. Wash hands thoroughly after handling. Contaminated work clothing should not be allowed out of the workplace.

Net weight of shipping container: 5 Lbs

Accurate, readable barcodes required

Lots of small text must be readable

Number of red icons varies by product and destination

EPSON
EXCEED YOUR VISION

A11766 LOT: 11111111111111111111
lot with 15 digits is working

Allyl bromide, 99%, stab. with 300-1000ppm Propylene oxide C3H5Br

CAS: 106-95-4 • EINECS: 203-446-6 • FW: 120.94 • MP: -115° • BP: 79.71° • FP: -2° • DENR: 1.366

LIGHT SENSITIVE

PRODUCT OF UNITED STATES

For research and development use only. All properties and hazards may not be known. Consult MSDS.

EPSON America, Inc.
System Devices Group
North America
www.epson.com/labprinters

EPSON
EXCEED YOUR VISION

A11766 LOT: 11111111111111111111
lot with 15 digits is working

Allyl bromide, 99%, stab. with 300-1000ppm Propylene oxide C3H5Br

CAS: 106-95-4 • EINECS: 203-446-6 • FW: 120.94 • MP: -115° • BP: 79.71° • FP: -2° • DENR: 1.366

LIGHT SENSITIVE

PRODUCT OF UNITED STATES

For research and development use only. All properties and hazards may not be known. Consult MSDS.

EPSON America, Inc.
System Devices Group
North America
www.epson.com/labprinters

EPSON
EXCEED YOUR VISION

A11766 LOT: 11111111111111111111
lot with 15 digits is working

Allyl bromide, 99%, stab. with 300-1000ppm Propylene oxide C3H5Br

CAS: 106-95-4 • EINECS: 203-446-6 • FW: 120.94 • MP: -115° • BP: 79.71° • FP: -2° • DENR: 1.366

LIGHT SENSITIVE

PRODUCT OF UNITED STATES

For research and development use only. All properties and hazards may not be known. Consult MSDS.

EPSON America, Inc.
System Devices Group
North America
www.epson.com/labprinters

2-step printing process can create non-compliant labels such as these

POTENTIAL TARGET MARKETS

Medical Device/Healthcare Industry

Companies that produce devices or solutions used for medical purposes

- Patient safety requires color codes and pictures
- Highly variable color content
- Precise fine print text and barcodes

Required color coding

Pictures of item required

Lots of small text must be readable

Accurate, readable barcodes required

Do-it-yourself Hardware Industry

Companies that sell household hardware for home improvement

- Retailers require full color pictures and color coded labeling for every item
 - Standards vary by retailer
- High SKU count — Stores have 25-50K SKUs requiring massive amounts of pre-print
- Design formats continuously change resulting in huge loss of pre-print

Required color coding

Pictures of item required

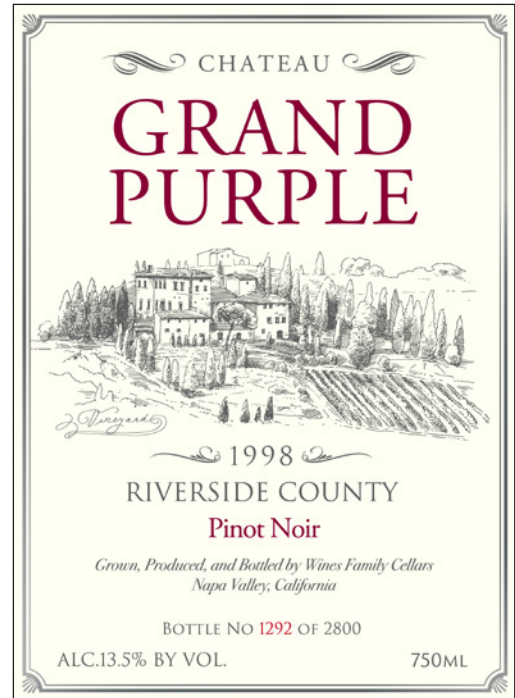
PATco Code	50077VYY
Type	Imperial equiv : 8 x 2 1/2
Material	Zinc & Yellow Passivated
ETD	06-Nov-2016
Quantity	1,000pcs approx
SKU	70302-0100
Ship to	WILD CRAFTS

www.pat.co.com

POTENTIAL TARGET MARKETS

Craft Beer and Wine Industry

- Small and independent breweries or wineries making limited production spirits
- Large runs of pre-printed labels not suitable for small batch quantities



Fresh Food

- Packaged, ready-made fresh food for sale in a deli, grocery store, or gas station
- Color can be used to convey nutritional information, warn of potential allergens and add branding



Manufacturing Industry

- Companies that make products for use or sale using labor and machines
- Color labels can be used to increase process efficiency, reduce inventory costs and add branding



SELLING THE VALUE OF COLOR LABELS

Customer Pain Points

Demanding retailer requirements

- Retailers require unique full-color pictures and color-coded labeling for every item
 - Plus, standards vary by retailer



High SKU count → massive amounts of pre-print

- Optimal order quantity is 20K – 100K labels
- Each variation of image, logo, etc. requires unique pre-print
- Requires someone to order and manage the stock
- Labels get dusty/damaged → scrap
- Label changes → scrap old pre-print



Downsides of thermal transfer printers

- Difficult to set up for good print quality
- Hard to thread ribbons and media
- Consumable printheads — expensive and create downtime
- Sub-par image quality



New labels for new SKUs take weeks

Huge opportunity for process improvement and reduction in lead time, inventory and cost!

SELLING THE VALUE OF COLOR LABELS

Benefit of adding color on a label



- A picture is worth 1000 words
- Color images help customers find product

Old thermal transfer

New color inkjet



- Color labels help retailers sell more
- Color-coded labels make items faster to stock, which enables business process improvement



Stores require pictures on virtually every product. Pictures make pre-printed labels unworkable.

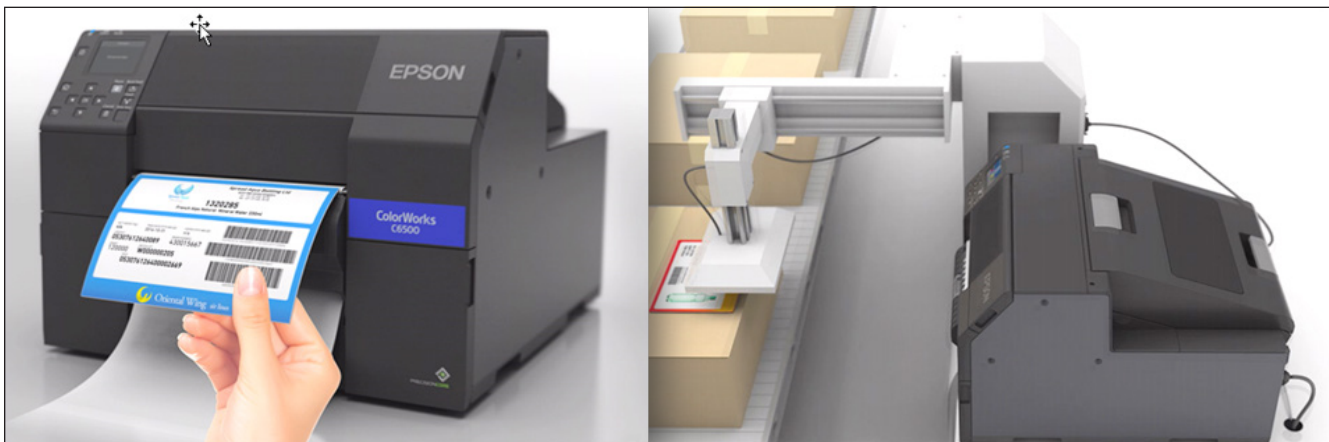
Epson ColorWorks Offers the Solution



- Effortlessly handle variable color content, custom label designs, diverse sizes and evolving requirements
- Eliminate pre-printed labels
- High resolution images, barcodes and text
- Compatibility with required enterprise software
- Easy operation and loading. Very low maintenance
- Extremely durable labels (BS5609 certified)
- The precise dots created by the PrecisionCore® TFP® printhead ensure consistently superior image quality



Smooth integration into production workflow with ZPL II, I/O port and peeler features



Epson Label Media

Epson Labels

For those unfamiliar with inkjet label media or those who don't want to spend the time and effort sourcing and trying out different media, Epson provides media in standard sizes.

- Guaranteed to work with Epson ColorWorks printers
- Reliable and help ensure a long printer life
- Consistently high image quality with scannable barcodes
- Durable prints — resistant to smearing, fading, water and many chemicals

EPSON
EXCEED YOUR VISION

High Gloss Label
Étiquette au fini très lustré

- Ideal for high-quality product labels, barcode labels, box labels for consumer products and more.
- Prints are resistant to smearing, fading, water and many chemicals.
- Permanent acrylic adhesive suitable for a variety of surfaces.

Misite pour les étiquettes de produits de qualité supérieure, les étiquettes codes à barres, les étiquettes d'emballage pour les produits de consommation et plus encore.

- Les impressions sont résistantes au masquage, à la décoloration, à l'eau et à bon nombre de produits chimiques.
- L'adhésif acrylique permanent convient à une variété de surfaces.

4" x 3"
101.6 mm x 76.2 mm
DIE CUT

4 po x 3 po
101,6 mm x 76,2 mm
PRÉDECOUPEES

Quantity / Quantité:
360

Length / Longueur:
100' / 100 pi

For / Pour:
ColorWorks C3500

Made in USA
Fabriqué aux É.-U.

Optimal storage conditions: Under 20 °C/70 °F, 50% RH. Application temperature: 5 °C/41 °F - 40 °C/104 °F.
Conditions de stockage optimales: À moins de 20 °C/70 °F, 50 % HR. Température d'application: 5 °C/41 °F - 40 °C/104 °F.

Please look up this product on Epson.com for warranty details.
Veuillez consulter les renseignements concernant ce produit sur Epson.ca pour la déclaration de garantie.

This label was printed with the Epson ColorWorks C3500.
Cet étiquette a été imprimée avec l'imprimante Epson ColorWorks C3500. OPI-58023 2/20

6 rolls / box
6 rouleaux / boîte

Part No. / Numéro de pièce
C35GD002

EPSON
EXCEED YOUR VISION

Durable Matte Synthetic Label
Étiquette synthétique durable au fini mat

- Ideal for OTC chemical labels, pharmaceutical labels, medical device labels, laboratory labels and more.
- Prints are resistant to smearing, fading, water and many chemicals.
- Permanent acrylic adhesive sticks to a variety of surfaces, including drums and plastic containers.

Misite pour l'emballage personnalisé SSM de produits chimiques, les étiquettes de produits pharmaceutiques, les étiquettes de dispositifs médicaux, les étiquettes de laboratoire et plus encore.

- Les impressions sont résistantes au masquage, à la décoloration, à l'eau et à bon nombre de produits chimiques.
- L'adhésif acrylique permanent adhère à une variété de surfaces, y compris les fûts et les contenants de plastique.

4" x 3"
101.6 mm x 76.2 mm
DIE CUT

4 po x 3 po
101,6 mm x 76,2 mm
PRÉDECOUPEES

Quantity / Quantité:
285

Length / Longueur:
75' / 75 pi

For / Pour:
ColorWorks C3500

Made in USA
Fabriqué aux É.-U.

Optimal storage conditions: Under 20 °C/70 °F, 50% RH. Application temperature: 5 °C/41 °F - 40 °C/104 °F.
Conditions de stockage optimales: À moins de 20 °C/70 °F, 50 % HR. Température d'application: 5 °C/41 °F - 40 °C/104 °F.

Please look up this product on Epson.com for warranty details.
Veuillez consulter les renseignements concernant ce produit sur Epson.ca pour la déclaration de garantie.

This label was printed with the Epson ColorWorks C3500.
Cet étiquette a été imprimée avec l'imprimante Epson ColorWorks C3500. OPI-58023 2/20

6 rolls / box
6 rouleaux / boîte

Part No. / Numéro de pièce
C35CD002

EPSON
EXCEED YOUR VISION

Premium Matte Label
Étiquette au fini mat de qualité supérieure

- Ideal for barcode labels, box labels for consumer products, shipping labels and more.
- Prints are resistant to smearing, fading, water and many chemicals.
- Permanent acrylic adhesive suitable for a variety of surfaces.

Misite pour les étiquettes codes à barres, les étiquettes d'emballage pour les produits de consommation, les étiquettes de livraison et plus encore.

- Les impressions sont résistantes au masquage, à la décoloration, à l'eau et à bon nombre de produits chimiques.
- L'adhésif acrylique permanent convient à une variété de surfaces.

4" x 3"
101.6 mm x 76.2 mm
DIE CUT

4 po x 3 po
101,6 mm x 76,2 mm
PRÉDECOUPEES

Quantity / Quantité:
400

Length / Longueur:
105' / 105 pi

For / Pour:
ColorWorks C3500

Made in USA
Fabriqué aux É.-U.

Optimal storage conditions: Under 20 °C/70 °F, 50% RH. Application temperature: 5 °C/41 °F - 40 °C/104 °F.
Conditions de stockage optimales: À moins de 20 °C/70 °F, 50 % HR. Température d'application: 5 °C/41 °F - 40 °C/104 °F.

Please look up this product on Epson.com for warranty details.
Veuillez consulter les renseignements concernant ce produit sur Epson.ca pour la déclaration de garantie.

This label was printed with the Epson ColorWorks C3500.
Cet étiquette a été imprimée avec l'imprimante Epson ColorWorks C3500. OPI-58023 2/20

6 rolls / box
6 rouleaux / boîte

Part No. / Numéro de pièce
C35MD002

MODEL	PROD CODE	FEATURE
Premium Matte (box of 6 rolls)	C35MD001	3500 Media - 4" x 2" die cut (565 labels/roll)
Premium Matte (box of 6 rolls)	C35MD002	3500 Media - 4" x 3" die cut (400 labels/roll)
Premium Matte (box of 6 rolls)	C35MD003	3500 Media - 4" x 6" die cut (200 labels/roll)
Premium Matte (box of 6 rolls)	C35MD004	3500 Media - 3" x 2" die cut (565 labels/roll)
Premium Matte (box of 6 rolls)	C35MD005	3500 Media - 3" x 5" die cut (240 labels/roll)
Premium Matte (box of 6 rolls)	C35MC001	3500 Media - 2" x 105' continuous label
Premium Matte (box of 6 rolls)	C35MC002	3500 Media - 3" x 105' continuous label
Premium Matte (box of 6 rolls)	C35MC003	3500 Media - 4" x 105' continuous label
Premium Matte (box of 6 rolls)	C35MC004	3500 Media - 4-1/8" x 105' continuous lbl
High Gloss (box of 6 rolls)	C35GD001	3500 Media - 4" x 2" die cut (540 labels/roll)
High Gloss (box of 6 rolls)	C35GD002	3500 Media - 4" x 3" die cut (380 labels/roll)
High Gloss (box of 6 rolls)	C35GD003	3500 Media - 4" x 6" die cut (190 labels/roll)
High Gloss (box of 6 rolls)	C35GD004	3500 Media - 3" x 2" die cut (540 labels/roll)
High Gloss (box of 6 rolls)	C35GD005	3500 Media - 3" x 5" die cut (230 labels/roll)
High Gloss (box of 6 rolls)	C35GC001	3500 Media - 2" x 100' continuous label
High Gloss (box of 6 rolls)	C35GC002	3500 Media - 3" x 100' continuous label
High Gloss (box of 6 rolls)	C35GC003	3500 Media - 4" x 100' continuous label
Durable Matte Synthetic (box of 6 rolls)	C35CD001	3500 Media - 4" x 2" die cut (400 labels/roll)
Durable Matte Synthetic (box of 6 rolls)	C35CD002	3500 Media - 4" x 3" die cut (285 labels/roll)
Durable Matte Synthetic (box of 6 rolls)	C35CD003	3500 Media - 4" x 6" die cut (145 labels/roll)
Durable Matte Synthetic (box of 6 rolls)	C35CD004	3500 Media - 3" x 2" die cut (400 labels/roll)
Durable Matte Synthetic (box of 6 rolls)	C35CD005	3500 Media - 3" x 5" die cut (170 labels/roll)

10

Epson Compatible Media

Epson works with all major media manufacturers to identify inkjet media that is compatible with Epson ColorWorks printers. This media has been tested by the media manufacturers and put through a final quality check by Epson.

- Manufactured by industry-leading companies
- Meet media specifications for ColorWorks printers
- Meet the basic standards of image quality, smudge resistance and water resistance

Compatible Label Media			Ratings					EPSON EXCEED YOUR VISION		
			NR - Not recommended. After the test, image is completely removed.							
			OK - After the test, image is still readable. There could be slight damage to media or some smearing of image.							
			Good - After the test, image remains the same and there is no damage to media.							
			Blank - untested.							
Description	Manufacturer (alphabetical order)	Product	C7500, C3500, C831	C7500G, C6000, C6500	Level of Water Resistance (NR/ OK/ Good)	Level of Alcohol Resistance (NR/ OK/ Good)	B55609 Approved? (Yes/No)	UL Certified? (Yes/No)	May Show Star Wheel Marks with C7500	Link to Vendor Spec Sheet
SUPER GLOSS										
High-Gloss Polypropylene	Avery Dennison	79659	X				NR			TDS
DemandJet™ 500HG	Avery Dennison	53109/ 53110	X				NR			TDS
DemandJet™ 500HG R195 40#SCK	Avery Dennison	53684	X				NR			
DemandJet™ 500HG FasCover™ S2501 40#SCK	Avery Dennison	53966	X				NR			TDS
White Polypropylene	Mactac	JWP9501		X	NR		NR		X	Data sheet
MAGjet® High Gloss Paper	Mactac	JG1802		X	NR				X	Data sheet
White Glossy Polyester	Wausau	W024545	X	X	NR		NR	No	No	Data sheet
White Glossy Polypropylene (50# Liner)	Wausau	W025324	X		NR		NR	No	No	X Data sheet
White Glossy Polypropylene (40# Liner)	Wausau	W024556	X	X	NR		NR	No	No	X Data sheet
GLOSS										
Gloss White BOPP WBJU S7000 40#BG	Avery Dennison	79659	X	X			NR			X TDS
Gloss Clear BOPP WBJU S7000 40#BG	Avery Dennison	79668	X	X			NR			X TDS
Gloss-Coated Photorealistic Paper	Green Bay Packaging	1GINK		X						Data sheet
Cascade™ Gloss Inkjet Paper	Spinnaker	48889		X				No		Data sheet
Cascade™ Gloss Clear Polypropylene	Spinnaker	48614		X			NR	No		Data sheet
Cascade™ Gloss White Polypropylene	Spinnaker	48613		X			NR	No		Data sheet
JETGLOSS-FSC / RP51 / 40 # WHITE KRAFT	UPM Raflatac	LS325A		X						X
JETGLOSS-FSC / RP51 / 2.8 mil WHITE KRAFT	UPM Raflatac	LS235H		X						X
SATIN/SEMI-GLOSS										
DemandJet SG WBJU AT20 40#SCK	Avery Dennison	54197	X	X			NR			TDS
DemandJet SG WBJU S2501 40#LF	Avery Dennison	54166	X	X			NR			TDS
Satin White BOPP WBJU AT20 40#BG	Avery Dennison	79800	X	X			NR			TDS
Semi-Gloss Paper	Mactac	JSG9002	X	X						Data sheet

Full list of Compatible Media posted at Epson.com/ColorWorks

- Over 100 different types of media and applications are listed, such as GHS labels, glossy labels and more
- List is updated regularly
- Includes these major media manufacturers, and more:



Software Compatibility



Software (alphabetical order)	C6000	C6500	C7500/ C7500G	C3500
	✓	✓	✓	✗
 BY SEAGULL SCIENTIFIC	✓	✓	✓	✓
	✓	✓	✓	✗
 GLOBAL SERVICES, INC.	✓	✓	✓	✗
	✓	✓	✗	✗
 ENTERPRISE LABELING SOLUTIONS	✓	✓	✓	✓
	✓	✓	✗	✗
	✓	✓	✓	✓
	✓	✓	✓	✗
 Barcode Better	✓	✓	✓	✓
	✓	✓	✓	✓

✓ Native or generally supported driver

BREWED IN SAN DIEGO, CA

Starboard



Lorem ipsum dolor sit amet, consectetur adipiscing elit, sed diam nonummy nibh euismod tincidunt ut laoreet dolore magna aliquam erat volutpat. Ut wisi enim ad minim veniam, quis nostrud exerci tation ullamcorper suscipit lobortis nisl ut aliquip ex ea commodo consequat.

Duis autem vel eum iriure dolor in hendrerit in vulputate velit esse molestie consequat, vel illum dolore eu feugiat nulla facilisis at vero eros et accumsan et iusto odio dignissim qui blandit praesent luptatum zzril delenit augue duiis dolore te feugait nulla facilisi.



PILSNER
5% ALC VOL

16 FL. OZ.

Lorem ipsum dolor sit amet, consectetur adipiscing elit, sed diam nonummy nibh euismod tincidunt ut laoreet dolore magna aliquam erat volutpat. Ut wisi enim ad minim veniam, quis nostrud exerci tation ullamcorper suscipit lobortis nisl ut aliquip ex ea commodo consequat. v

6" x 5", C6500 gloss ink
High Gloss BOPP
Image cost: 3.8 cents




STINGER'S

ALL NATURAL WHEEL WAX

- RESISTS BRAKE DUST BUILD-UP • SAFE FOR ALL WHEELS
- MAKES WHEELS EASIER TO CLEAN • SEALS & PROTECTS



4" x 4", C7500G
High Gloss BOPP
Image cost: 3.1 cents



1.5" x 0.5", C6000 matte ink
Premium Matte Label
Image cost: 0.2 cents

Image cost based on Normal mode printing unless otherwise indicated. Image costs are approximate. Actual yields and costs may vary based on printing conditions and volume.

Amalia Chemicals, Inc.

2001 Norton Road • Charlotte, NC 28207

Batch or Lot Number

PO #: 123456789abc

DOM: 12/31/2017

Mix Date: (PMF) 09/31/2017

DOP: 10/31/2017

Shelf Life: 12/31/2019

Mix Ratio Volume: Base/Act/Thinner: 3 : 1 : NA

Mixing instructions / thawing instructions: Shake base component CA 8222/F24098 for 10 minutes. Slowly add one volume of activator component CA 8200B to three volumes of base component CA 8222/F24098. Mix to uniformity.

Voc: Meets scaqmd rule 1124 coating

voc less exempt per rule 1124

BASE COMPONENT: 457 GM/L

MIXED AS APPLIED: 420 GM/L

MAX MATERIAL VOC PER RULE 443.1 (g)

BASE COMPONENT: 457 GM/L

MIXED AS APPLIED: 420 GM/L MAX

8. 3.2 Printed 7/12/17 2:15pm

1 of 50 - UN 1263



(01) 0 000000 00000 0



Hazard statement:

- Highly flammable liquid and vapor.
- Harmful if swallowed.
- Causes serious eye damage.
- Causes skin irritation.
- May cause cancer.
- May cause respiratory irritation.
- May cause drowsiness and dizziness
- May cause damage to organs through prolonged or repeated exposure. Toxic to aquatic life with long lasting effects.
- See MSDS and TDS for additional information.

**Coatings Polyurethane High Solids
CA8222/F24098 - 10695FW2034MPY22K**

EINECS-203-446-6 Type I Class H Grade 1

Precautionary statements Prevention: Obtain special instructions before use. Do not handle until all safety precautions have been read and understood. Use personal protective equipment as required. Wear protective gloves. Wear eye or face protection. Keep away from heat, sparks, open flames and hot surfaces. No smoking. Use explosion-proof electrical, ventilating, lighting and all material-handling equipment. Use only non-sparking tools. Take precautionary measures against static discharge. Keep container tightly closed. Use only outdoors or in a well-ventilated area. Avoid release to the environment. Do not breathe vapor. Do not eat, drink or smoke when using this product. Wash hands thoroughly after handling. Contaminated work clothing should not be allowed out of the workplace.



Net weight of shipping container: 5 Lbs



Ultra Implantable™ Fictitious Medical Device

2.25 mm x 8 mm

CAT 123ABC



MANUFACTURED ON:
2017-07-31



SN 7DEFG45

2 SINGLE USE



**DO NOT USE
IF PACKAGE
IS DAMAGED**

123 Technology Dr
Somewhere,
XX 00000

800.555.1234 (USA)
555.555.1234 (All Others)
www.GlobalMedCompany.com



GlobalMed®

6" x 5"
C6500 matte ink
Premium Matte Label
Image cost:
3.3 cents

NDC 0005-3962-333

Heparin Sodium

in 0.9% Sodium Chloride Injection

LOT H-2166-01

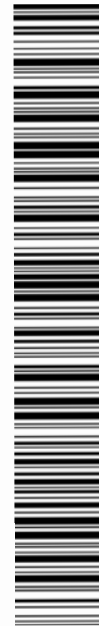
EXP. 06/18

Manufactured by
Helix tech
development

Do not admix with other drugs.

1,000 units
(2 units/mL)

Electrolytes (mEq/liter):
Sodium 185 Chloride 155
Phosphate (HPO₄) 31
Citrate 6



6" x 5"
C6500 matte ink
Premium Matte Label
Image cost:
5.6 cents

Opposite page:
8.375" x 10.875"
C6500 matte ink
Durable Matte
Synthetic Label
Image cost:
5.8 cents

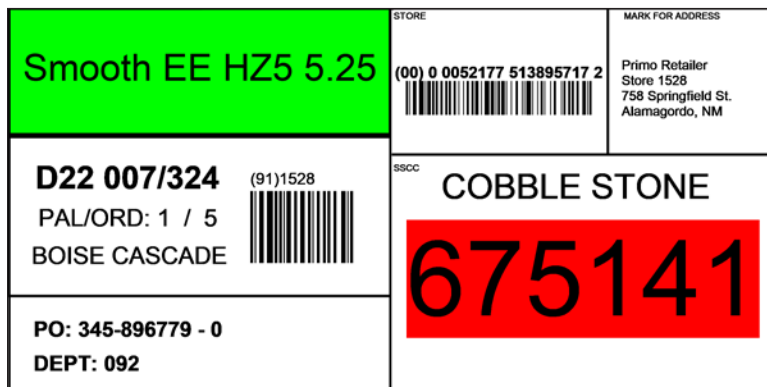
Image cost based on Normal mode printing unless otherwise indicated. Image costs are approximate. Actual yields and costs may vary based on printing conditions and volume.



4" x 6", C3500
 Premium Matte Label
 Image cost: 7.3 cents



4" x 6", C6000 matte ink
 Plain paper label
 Image cost (Max Speed mode): 1.4 cents



4" x 2", C6000 matte ink
 Plain paper label
 Image cost (Max Speed mode): 0.9 cents

Image cost based on Normal mode printing unless otherwise indicated. Image costs are approximate. Actual yields and costs may vary based on printing conditions and volume.

ALBION FINE WINES

SINCE 1968

CHARDONNAY

2010

The grapes in this blanc were sourced from growers in the sunset valley regions, where the microclimate of warm days and cool nights allow the grapes to mature more slowly, creating higher concentrations of sugars and acid. This adds to the texture and depth of flavor so sought after by those with a refined palette. The added time to ripen on the vine allows a truer taste of chile and not the flavors commonly found in other wines.

13.0% ABV

4" x 6", C7500
 Estate Grade Textured Paper
 Normal mode
 Image cost: 1.2 cents

Image cost based on Normal mode printing unless otherwise indicated. Image costs are approximate. Actual yields and costs may vary based on printing conditions and volume.

EXCEED YOUR VISION

EPSON®


To Be Announced	3 - 4 PM
Spot Color Replacement	2 - 3 PM
Service Contracts/Warranties	1 - 2 PM
C6000 Series for the GHS Industry	11 - 12 PM
Colorizing ZPL with C6000 Series	10 - 11 AM
C6000 Series Overview	9 - 10 AM


Event Schedule

EPSON AMERICA EVENT


ColorWorks 2020

JOHN SMITH
 VICE PRESIDENT
 COLOR CORP
 LONG BEACH CA





EXHIBITOR



Tradeshow ID badge
 4" x 8", C3500
 Cardstock
 Image cost (Speed mode): 1.8 cents

Example of Variable Print Resolutions



4" x 2", C6000 gloss ink
Semi-gloss paper
Quality mode
Image cost: 2.1 cents



4" x 2", C6000 gloss ink
Semi-gloss paper
Normal mode
Image cost: 1.6 cents



4" x 2", C6000 gloss ink
Semi-gloss paper
Max Speed mode
Image cost: 1.1 cents

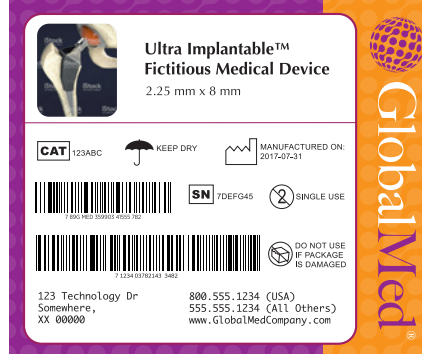
Image cost based on Normal mode printing unless otherwise indicated. Image costs are approximate.
Actual yields and costs may vary based on printing conditions and volume.

Label Cost Estimator

Low – Med Coverage



Med – High Coverage



High Coverage



Media	Cost per Square Inch*
Plain paper	\$0.00068
Matte paper	\$0.00116
Gloss	\$0.00108
Matte Synthetic	\$0.00103

Media	Cost per Square Inch*
Plain paper	\$0.00064
Matte paper	\$0.00109
Gloss	\$0.00134
Matte Synthetic	\$0.00106

Media	Cost per Square Inch*
Plain paper	\$0.0017
Matte paper	\$0.0029
Gloss	\$0.0031
Matte Synthetic	\$0.0024

* Based on MSRP cost of ink and normal printing mode

Size

This is the size of the label in square inches = Height (in inches) x Width (in inches).

Estimated Cost

$$\begin{array}{ccc}
 \boxed{} & \times & \boxed{} = \boxed{} \\
 \text{Cost per square inch} & & \text{Label size in square inches} \\
 & & \text{(height x width)} \\
 & & \text{Approximate cost per label}
 \end{array}$$

Example: A 4" x 6" typical shipping label

- **Coverage:** Low – Med, cost is \$0.00068/ square inch
- **Size:** 24 in² (4" x 6")
- **Cost:** \$0.00068 x 24 = \$0.0163 = **1.6 cents per label**

Ink Cost Calculator Tool

Epson provides partners free access to the ink cost calculator, a user-friendly web tool. This tool is intended to create a quick estimate of printing cost per label and of label yield per cartridge. Actual yields and costs will be affected by print volume, media used, actual print pattern, and print modes. This tool is available on the Epson Partner Portal: <https://epsonpartnerportal.com/colorworks-marketing-resources>

ColorWorks[®] CW-C6000 Series Color Inkjet Label Printers

Label Printers

Commercial



CW-C6000A



CW-C6500P

Introducing the Future of Mission-critical Label Printing.

Reliability you can count on — engineered by Epson for demanding applications; backed by industry-leading service and support

First printer specifically designed as a color upgrade to black-and-white thermal transfer printers¹ — with similar media handling capabilities, speed, features and connectivity options, all at a comparable price point²

Enhanced productivity — eliminate the need to pre-print; speeds up to 5" per second³; fast time to first label

Astounding image quality — up to 1200 dpi resolution with various droplet sizes; crisp images comparable to pre-printed labels

Seamless integration — compatible with ZPL II, major middleware, SAP, Windows[®], Mac[®] and Linux

Remote printer management — for managing large fleets over the network

Applicator I/O control port for truly automated workflow — supports I/O commands; can be integrated into nearly any workflow

Low cost — comparable to existing thermal transfer printers²

Durable, high-quality labels — meets BS 5609 certification⁴

CW-C6000P and C6500P — the first color inkjet label printer with a peel-and-present option⁵

CW-C6000A and C6500A — auto cutter included

The new Epson® ColorWorks series label printers, engineered for demanding applications, are revolutionizing both monochrome and color label printing with rugged reliability you can count on, delivering dependable, commercial inkjet printing with fast-drying, durable color inks and enhanced productivity.

Peel-and-present

Epson offers the first color inkjet printer with peel-and-present capability, which can help speed up the manual application of on-demand labels. An integrated label-taking sensor holds off subsequent printing until the previous label is removed. This feature is ideally suited for fully automated label application systems. This unique capability eliminates the need for a loose loop and allows individual labels to be taken as soon as they are printed.



CW-C6000P 4"
Peel-and-present



CW-C6500P 8"
Peel-and-present

Auto Cutter

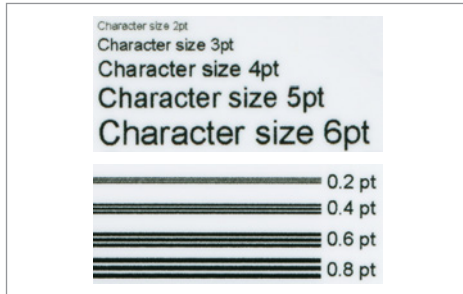
With a 4" or 8" built-in auto cutter covering the full spectrum of label sizes to create variable-length labels and enable easy job separation, these new ColorWorks models offer cost and inventory reductions compared to using pre-printed labels.



CW-C6000A 4"
Auto Cutter

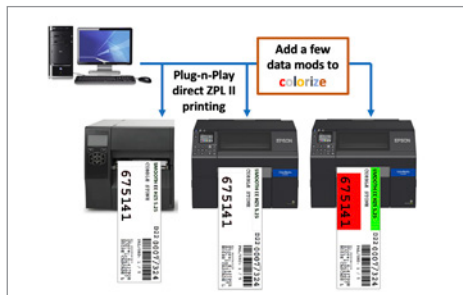


CW-C6500A 8"
Auto Cutter



High-quality Printing

Epson-engineered PrecisionCore® TFP® printhead technology delivers ultra sharp text and precise barcodes. It also produces varying droplet sizes that, coupled with a 1200 x 1200 dpi resolution, can produce a huge gamut of vibrant, accurate colors, smooth gradations and fine image details. So, whether the challenge is to produce complex informational labels or high-quality product labels, the CW-C6000 series is up to the challenge.



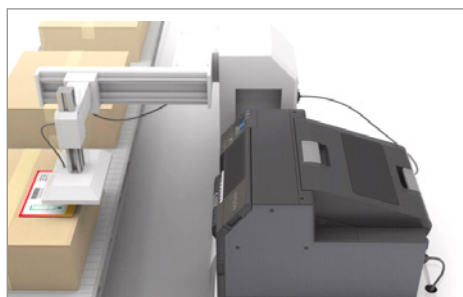
ESC/Label and ZPL II Interface Languages

ZPL II capabilities allow you to experience the advantages of Epson inkjet technology without reprogramming existing systems. ESC/Label command extensions can be added to unlock the power of color. Leverage color for color-coded fields, product pictures, logos and marketing messages to improve overall business processes and brand image.



Remote Management Tools

Epson made the CW-C6000 family for large-scale enterprise environments. To support these high-volume scenarios, a wide range of remote management tools are available. These allow IT and support teams to remotely monitor the status of large fleets of printers, generate email alerts on items needing attention, remotely deploy firmware updates, set up complex network environments, and view or modify settings from any computer browser or Android™ or Apple® powered smartphone.



General-purpose I/O Port

Designed for mission-critical production, all CW-C6000 family printers come equipped with a general-purpose I/O port. This gives automation developers all the control they need to seamlessly integrate the printer into their automated workflow. The port provides all the necessary information on supply levels, status, faults and readiness. Inputs enable users to pause, clean and print.

Printer

Print Method: Serial inkjet PrecisionCore TFP
Image Security: Nozzle Verification Technology, auto head maintenance and auto missing dot compensation
Ink Type: UltraChrome[®] DL pigment ink
Ink Colors: CMYK in individual cartridges
Control Panel: 2.7" full-color graphic display and 13-key pad allow for local configuration and operation
Indicators: Power, status and pause LEDs, beeper
Color Correction: ICC color profiles, RGB spot color substitution, driver-based color adjustment
Banner Printing: Supports pages sent in segments to produce large signs without gaps
Barcode Font: UPC-A, UPC-E, JAN13(EAN), JAN8(EAN), Code39, ITF, Codabar, Code93, Code128, GS1-128, GS1 DataBar Omnidirectional, GS1 DataBar Truncated, GS1 DataBar Limited, GS1 DataBar Expanded
Two-dimensional Code Printing: PDF417, QR Code, Maxi Code, GS1 DataBar Stacked, GS1 DataBar Stacked Omnidirectional, GS1 DataBar Expanded Stacked, DataMatrix, Aztec Code, MicroPDF417, Micro QR Code
Cutter Life (cuts):
 Paper Liner up to 1.5 M
 Synthetic Liner up to 0.5 M
 Continuous Matte Paper up to 0.5 M
 Continuous Gloss Paper up to 0.3 M
 Continuous Synthetic up to 0.1 M
Printer Durability:
 Permanent printhead
 Feeding mechanism 7.8 M inches (200 km) before major service

Media

Media Sources: Internal roll-fed, rear-feed fan fold, external rear-powered unwinder
Media Construction: Standard die-cut label with or without black mark, die-cut label with matrix on and black mark, continuous tag stock with or without black mark, continuous label with or without black mark
Media Types: Inkjet Coated Matte Paper, Gloss Paper, High-gloss Synthetic, Fine Paper, PET Film, Matte Synthetic, Uncoated Plain Paper
Thickness: .005" – .009" (0.129 mm – 0.236 mm)
Label Length:
 Max. 24" (610 mm)
 Min. 0.31" (8 mm) no finishing
 0.50" (13 mm) peeling
 0.59" (15 mm) cutting
Roll Media Core Diameter: 3" (76 mm)
Die-cut Label Gap: 2 mm – 6 mm
Gap Sensor Location: Adjustable 0.4" – 2.4" (10 mm – 60 mm) in 0.2" (5 mm) steps from left paper guide
Black Mark Sensor Location: Fixed at 0.5" (12 mm) from left paper guide
Black Mark Size: Min. 0.72" x 0.16" (18 mm x 4 mm) (W x H)

General

Interfaces: Ethernet 1000BASE-T/100BASE-TX/10BASE-T USB 2.0
Operating System: Windows 10, 8.1, 8, 7 SP1, Windows Vista[®] SP2, Windows Server[®] 2019, 2016, 2012 R2, 2012, 2008 R2, 2008, macOS[®] 10.6.8 or later, Linux

General (continued)

Direct Command-based Printing: Zebra ZPL II native language support, plus command extensions, to allow for colorization of data; Epson ESC/Label color command language
General-purpose I/O Port: 25-pin D-sub connector; provides detailed status on supply levels, faults and readiness; enables control to pause, clean and print
Remote Management Tools: Epson Device Admin, WebConfig, Epson Monitoring Tool, Printer Setting Utility, Epson Deployment Tool, EpsonNet Setup Manager, EpsonNet Config SE, Epson Firmware Updater
Operating Temperature:
 5 to 35 °C/20 – 80% RH humidity
Storage Temperature:
 -20 to 60 °C/5 – 85% RH humidity
Power Consumption:
 50 – 60 W Printing (average printing)
 4.1 – 4.4 W Standby
 0.2 – 0.5 W Power Off State
Rated Voltage: AC 100 – 240 V AC
Rated Frequency: 50 – 60 Hz
Acoustic Noise: Approx. 55 dBA
EMI: FCC/ICES-003 Class A, VCCI class A, CE Marking
Safety Standards: UL1950/CSA C22.2 No.950, TUV, GOST-R
Warranty: 1-year depot repair

What's in the Box

ColorWorks CW-C6000/CW-C6500 printer, AC power cord, full-capacity ink cartridges, maintenance box, instruction sheet, CD with utilities and manuals

Ordering Information

CW-C6000A Printer – 4" Auto Cutter	C31CH76101
CW-C6000P Printer – 4" Peel-and-present	C31CH76201
CW-C6500A Printer – 8" Auto Cutter	C31CH77101
CW-C6500P Printer – 8" Peel-and-present	C31CH77201
SJIC35P-K Ink Cartridge (Black)	C13T44B120
SJIC35P-C Ink Cartridge (Cyan)	C13T44B220
SJIC35P-M Ink Cartridge (Magenta)	C13T44B320
SJIC35P-Y Ink Cartridge (Yellow)	C13T44B420
SJMB 60/65 Maintenance Box	C33S021501
SP8X Spare Spindle 8"	C32C881301
SP4X Spare Spindle 4"	C32C881101

Model-specific Specifications	CW-C6000A	CW-C6000P	CW-C6500A	CW-C6500P
Feed	Auto Cutter	Peel-and-present	Auto Cutter	Peel-and-present
Media Width	1.0" (25 mm) - 4.4" (112 mm)	1.0" (25 mm) - 4.4" (112 mm)	1.0" (25 mm) - 8.5" (216 mm)	1.0" (25 mm) - 8.5" (216 mm)
Print Width	4.25" (108 mm)	4.25" (108 mm)	8.34" (212 mm)	8.34" (212 mm)
Roll Size O.D.	8.0" (203 mm)	8.0" (203 mm)	6.0" (153 mm)	6.0" (153 mm)
Weight - Printer (Dry)	50.7 lb (23.0 kg)	50.7 lb (23.0 kg)	57.3 lb (26.0 kg)	57.3 lb (26.0 kg)
Weight - Shipping	75.0 lb (34.0 kg)	75.0 lb (34.0 kg)	81.6 lb (37.0 kg)	81.6 lb (37.0 kg)
Dimensions - Printer (W x D x H)	13.4" x 22.2" x 12.8" (340 mm x 565 mm x 326 mm)	13.4" x 22.8" x 12.8" (340 mm x 580 mm x 326 mm)	17.5" x 20.3" x 12.8" (444 mm x 515 mm x 326 mm)	17.5" x 20.9" x 12.8" (444 mm x 530 mm x 326 mm)
Dimensions - Shipping (W x D x H)	19.5" x 27" x 18.5" (495 mm x 685 mm x 470 mm)	19.5" x 27" x 18.5" (495 mm x 685 mm x 470 mm)	24" x 28" x 19" (610 mm x 710 mm x 480 mm)	24" x 28" x 19" (610 mm x 710 mm x 480 mm)

Print Mode and Speed Table

Printer Speed (Inches Per Second)	Resolution (dpi)	Head Passes	2.2" (56 mm)	3.5" (89 mm)	6" (153 mm) (C6500 models only)	8" (203 mm) (C6500 models only)
Max. Speed	300 x 600	1	5.8	5.0	3.9	3.4
Speed	600 x 600	1	3.9	3.2	2.4	1.9
Normal	600 x 600	2.5	2.3	2.1	1.6	1.3
Quality	600 x 1200	6	0.9	0.7	0.6	0.5
Max. Quality	1200 x 1200	12	0.4	0.3	0.3	0.2

1 The CW-C6000/C6500 family is the first to bring to market the combination of features of direct ZPL II printing, peel-and-present, remote printer management, companion four- and eight-inch models, applicator I/O interface, broad middleware support, and comparable price points. | 2 Printers and consumable costs are similar when comparing similarly featured leading brand thermal transfer printers and supplies for similar high-durability images on similar media. | 3 Printing in Max Speed Mode, 300 x 600 dpi, 3.2" (89 mm) print width. | 4 ColorWorks CW-C6000/C6500 inkjet printers with UltraChrome DL pigment ink, used in combination with Avery Dennison Fasson[®] 3.5M Matte WH Syn Paper WBIUS4600/50#SCK (Spec 79724), has been BS 5609 certified. | 5 Compared to color inkjet label printers available in the U.S. and Canada as of July 2019.

Better Products for a Better Future[™]
eco.epson.com



Epson America, Inc.
3840 Kilroy Airport Way, Long Beach, CA 90806

Epson Canada Limited
185 Renfrew Drive, Markham, Ontario L3R 6G3

www.epson.com
www.epson.ca

Specifications and terms are subject to change without notice. EPSON, ColorWorks, PrecisionCore, TFP and UltraChrome are registered trademarks, EPSON Exceed Your Vision is a registered logomark and Better Products for a Better Future is a trademark of Seiko Epson Corporation. Apple, Mac and macOS are trademarks of Apple Inc., registered in the U.S. and other countries. Windows, Windows Server and Windows Vista are either registered trademarks or trademarks of Microsoft Corporation in the United States and/or other countries. Android is a trademark of Google LLC. Fasson is a registered trademark of Avery Dennison Corporation. All other product and brand names are trademarks and/or registered trademarks of their respective companies. Epson disclaims any and all rights in these marks. Copyright 2020 Epson America, Inc. CPD-58012R1 1/20

Contact:



ColorWorks[®] C7500G

Inkjet label printer

Label Printers

Industrial



PRECISIONCORE
Heat-Free Technology

High-speed, batch, near-prime color label printer, for on-demand gloss labels.

Reliable performance — rugged design means minimal maintenance and a low overall cost of ownership; ideal for busy, on-demand environments

Astounding image quality — PrecisionCore[®] Heat-Free inkjet technology and UltraChrome[®] DL Inks from Epson; delivers vibrant, accurate colors, smooth gradations, precise barcodes and ultra sharp text

High-speed, on-demand color printing — speed through multiple full-color labels with variable data up to 11.8" per second¹

Powerful productivity — Just in Time Color[™] printing for high-volume glossy labeling applications

Low cost of labeling — up to 50 percent lower printing costs than with laser and thermal transfer printers for high-durability color labels²

Seamless integration — built-in ZPL-II emulation with the ability to automatically merge color artwork from memory eliminates the need for pre-printed labels in traditional thermal transfer applications

Highly efficient — high-yield ink cartridges mean fewer user interventions and less waste than most thermal transfer printers; easy to change, so there's less downtime

Printer

Print method PrecisionCore TFP[®] with Nozzle Verification Technology
Ink type UltraChrome DL, 4 individual CMYK cartridges
Print resolution: 1200 x 600 dpi
Print speed 300 mm/s
Print width 4.25" (108 mm) max.
Media types Roll-fed or fan-fold, die cut; single layer or adhesive labels on liner; plain paper, fine paper, PET film, synthetic

Media Dimensions

Width 1.97" (50 mm) minimum – 4.41" (112 mm) maximum
Thickness .005" – .009" (0.129 – 0.236 mm)
Roll size 8" O.D. Maximum label length 23.6" (1600 mm)
Core diameter 3" (76 mm)
Media sensors Gap, black mark
Die-cut label gap Min. 0.12" (3.0 mm)
Black mark size Min. 1.1" x 0.2" (28 mm x 5 mm) (W x H)

General

Interfaces: USB 2.0 High-speed, Ethernet 10/100 BASE-T
Operating system Windows[®] 8.1 (32-bit, 64-bit), Windows 8 (32-bit, 64-bit), Windows 7 SP1 (32-bit, 64-bit), Windows Vista[®] SP2 (32-bit, 64-bit), Windows XP SP3 (32-bit), Windows Server[®] 2012 R3, Windows Server 2013, Windows Server 2008 R3, Windows Server 2008 R3 (32-bit, 64-bit), Windows Server 2003 R3 (32-bit)
Direct command-based printing Zebra[®] ZPL II[™] native language support; plus command extensions to allow for colorization of data. Epson ESC/Label color command language

General (continued)

Barcode font UPC-A, UPC-E, JAN13(EAN), JAN8(EAN), Code39, ITF, Codabar, Code93, Code128, GS1-128, GS1 DataBar Omnidirectional, GS1 DataBar Truncated, GS1 DataBar Limited, GS1 DataBar Expanded
Two-dimensional code printing PDF417, QR Code, Maxi Code, GS1 DataBar Stacked, GS1 DataBar Stacked Omnidirectional, GS1 DataBar Expanded Stacked, DataMatrix, Aztec Code, MicroPDF417, Micro QR Code
Operating temperature 5 to 35 °C / 20 – 80% RH
Storage temperature -20 to 60 °C / 5 – 85% RH
Overall dimensions 15.4" x 23.5" x 15.5" (W x D x H)
Weight Approximately 37.0 kg (81.57 lb) (without ink)
Power consumption 50 – 60 W Printing (average printing)
 4.1 – 4.4 W Standby
 0.2 – 0.5 W Power Off state
Rated voltage AC 100 – 240 VAC
Rated frequency 50 – 60 Hz
Acoustic noise approx. 55 dBA
EMI FCC / ICES-003 Class B
Safety standards UL60950-1/CSA C22.2 No.60950-1
Printer durability Printhead 5 years
 Feeding mechanism 500 Km before major service
Warranty 1-year depot repair

What's in the Box

ColorWorks C7500G printer, AC power cord, full capacity ink cartridges, sample label roll, instruction sheet, CD with utilities and manuals

Ordering Information

TM-C7500-011 4 inch-color label printer- Gloss	C31CD64311
TU-RC7508-471 Take Up Unit Option for C7500 / C7500G	C32C8154471
SJIC30P (B) Black Ink — Gloss	C33S020635
SJIC30P (C) Cyan Ink — Gloss	C33S020636
SJIC30P (M) Magenta Ink — Gloss	C33S020637
SJIC30P (Y) Yellow Ink — Gloss	C33S020638
SJMB7500 Maintenance Box	C33S020596

	C7500	C7500G
Ink Type	SJIC26P DURABrite [®] Ultra	SJIC30P UltraChrome DL
Media		
Plain paper – uncoated	Richer image – darker black	Good image – sharp colors
Matte paper – coated	Richer image – darker black	Good image – sharp colors
Matte synthetic – coated	Richer image – darker black – BS5609	Good image – sharp colors
Low gloss paper – coated	Good image – sharp colors	Best image
Semi-gloss paper – coated	Not supported	Best image
High-gloss paper – coated	Not supported	Best image
High-gloss synthetic – coated	Not supported	Best image

1 Printing in full 1200 x 600 resolution with Flush-onto-Paper mode enabled. With Flush-onto-Paper mode disabled, print speed is up to 10.4" per second. | 2 Up to 50 percent lower printing cost than competitive color laser printers and thermal transfer printers using full resin ribbons available in July 2014. Calculation based on continuous printing of GHS-certified color labels using the suite of ISO/IEC 24712 text and graphics images, with highest-capacity cartridges purchased at MSRP. Actual costs will vary based on print task and use conditions. | 3 Only printing is supported under Windows Server OS.

Better Products for a Better Future[™]
eco.epson.com



Epson America, Inc.
3840 Kilroy Airport Way, Long Beach, CA 90806

Epson Canada Limited
185 Renfrew Drive, Markham, Ontario L3R 6G3

www.epson.com
www.epson.ca

Specifications and terms are subject to change without notice. EPSON, ColorWorks, DURABrite, PrecisionCore, TFP and UltraChrome are registered trademarks, EPSON Exceed Your Vision is a registered logomark and Better Products for a Better Future is a trademark of Seiko Epson Corporation. Just In Time Color is a trademark of Epson America, Inc. Windows, Windows Server and Windows Vista are either registered trademarks or trademarks of Microsoft Corporation in the United States and/or other countries. SmartWay is a registered trademark of the U.S. Environmental Protection Agency. All other product and brand names are trademarks and/or registered trademarks of their respective companies. Epson disclaims any and all rights in these marks. Copyright 2019 Epson America, Inc. CPD-51160R1 1/20

Contact:

ColorWorks C7500

Inkjet label printer

Label Printers

Industrial



Powered by

PRECISIONCORE™



Fast, full-color label printer for Just in Time Color™ printing.

Reliable performance — rugged design means minimal maintenance and a low overall cost of ownership; ideal for busy, on-demand environments

Powerful productivity — Just in Time Color printing for high-volume labeling applications

High-speed, on-demand, color printing — speed through multiple full-color labels with variable data up to 11.8" per second¹

Durable labels — BS-5609 certification means labels won't smudge, smear or fade²

Low cost of labeling — up to 50 percent lower printing cost than with laser and thermal transfer printers for high-durability color labels³

Seamless integration — built-in ESC/Label language means you can use the printer with your existing workflow, and even add color with simple programming extensions

Astounding image quality — powered by PrecisionCore™ inkjet technology from Epson; delivers precise barcodes and ultra sharp text

Highly efficient — high-yield ink cartridges mean fewer user interventions and less waste than most thermal transfer printers; easy to change, so there's less downtime

Printer

Print method: PrecisionCore TFP[®] with Nozzle Verification Technology
Ink type: Pigmented ink, 4 individual CMYK cartridges
Print resolution: 1200 x 600 dpi
Print speed: 300mm/s
Print width: 4.1" (104mm) max.
Media types: Roll-fed or fan fold, die cut; single layer or adhesive labels on liner; plain paper, fine paper, PET film, synthetic

Media Dimensions

Width: 2" – 4.25" (50 – 108mm) — roll feed
Thickness: 4.7 – 7.5mils (0.12 – 0.19mm)
Roll size O.D.: 8.0" (204mm) max.
Core diameter: 3" (76mm)
Media sensors: Gap, black mark
Die-cut label gap: Min. 0.12" (3.0mm)
Black mark size: Min. 1.1" x 0.2" (28mm x 5mm) (W x H)

General

Interfaces: USB 2.0 High-speed, Ethernet 10/100 BASE-T
Operating system: Microsoft[®] Windows[®] 8.1 (32-bit, 64-bit), Windows 8 (32-bit, 64-bit), Windows 7 SP1 (32-bit, 64-bit), Windows Vista[®] SP2 (32-bit, 64-bit), Windows XP SP3 (32-bit), Windows Server[®] 2012 R2, Windows Server 2012, Windows Server 2008 R2, Windows Server 2008 (32-bit, 64-bit), Windows Server 2003 R2 (32-bit)

General (continued)

Barcode font: UPC-A, UPC-E, JAN13(EAN), JAN8(EAN), Code39, ITF, Codabar, Code93, Code128, GS1-128, GS1 DataBar Omnidirectional, GS1 DataBar Truncated, GS1 DataBar Limited, GS1 DataBar Expanded
Two-dimensional code printing: PDF417, QR Code, Maxi Code, GS1 DataBar Stacked, GS1 DataBar Stacked Omnidirectional, GS1 DataBar Expanded Stacked, DataMatrix, Aztec Code, MicroPDF417, Micro QR Code
Operating temperature
 5 to 35 °C / 20 – 80% RH humidity
Storage temperature
 -20 to 60 °C / 5 – 85% RH humidity
Overall dimensions
 15.4" x 23.5" x 15.5" (W x D x H) — Printer
Weight
 Approximately 37.0 kg (81.57 lb) — Printer (without ink)
Power consumption
 50 – 60 W Printing (average printing)
 4.1 – 4.4 W Standby
 0.2 – 0.5 W Power Off state
Rated voltage
 AC 100 – 240 VAC
Rated frequency
 50 – 60 Hz
Acoustic noise approx.
 55 dBA
EMI
 FCC / ICES-003 Class B
Safety standards
 UL60950-1/CSA C22.2 No.60950-1
Warranty
 One year depot repair

What's in the Box

ColorWorks C7500 printer, AC power cord, full capacity ink cartridges, sample label roll, instruction sheet, CD with utilities and manuals

Ordering Information

TM-C7500-011 Color Label Printer	C31CD84011
TU-RC7508-471 Take Up Unit Option	C32C815471
SJIC26P (C) Cyan Ink	C33S020615
SJIC26P (B) Black Ink	C33S020614
SJIC26P (M) Magenta Ink	C33S020616
SJIC26P (Y) Yellow Ink	C33S020617
SJMB7500 Maintenance Box	C33S020596

ESC/Label

Epson America, Inc. 3840 Kilroy Airport Way, Long Beach, CA 90806
Epson Canada Limited 185 Renfrew Drive, Markham, Ontario L3R 6G3
www.epson.com
www.epson.ca

1 Printing in full 1200 x 600 resolution with flush-onto-paper mode enabled. With flush-onto-paper mode disabled, print speed is up to 10.4" per second. | 2 ColorWorks C7500 inkjet printer with DURABrite[®] pigment ink, used in combination with Neenah Kimdura poly media, has been BS-5609 certified. | 3 Up to 50 percent lower printing cost than competitive color laser printers and thermal transfer printers using full resin ribbons available in July 2014. Calculation based on continuous printing of GHS-certified color labels using the suite of ISO/IEC 24712 text and graphics images, with highest-capacity cartridges purchased at MSRP. Actual costs will vary based on print task and use conditions.

Specifications and terms are subject to change without notice. EPSON, DURABrite and TFP are registered trademarks, EPSON Exceed Your Vision is a registered logomark and PrecisionCore is a trademark of Seiko Epson Corporation. Just in Time Color is a trademark of Epson America, Inc. All other product and brand names are trademarks and/or registered trademarks of their respective companies. Epson disclaims any and all rights in these marks.
 Copyright 2014, Epson America, Inc. CPD-42092 9/14

Name

Email

Phone Number

ColorWorks[®] C3500 Color Inkjet Label Printer



Label Printers

Commercial

The full-color label printer with Just In Time Color[™] printing.

Compact, robust design — ideal for commercial use and smaller workspaces

Productivity — speeds up to 4" per second¹

High-quality 4-color inkjet printing — crisp results for labels with color codes, photos and pictograms; quality comparable to pre-printed labels

Individual ink cartridges — more efficient; low cost of maintenance

Supports all major label design applications — barcode software, label design software and more

Durable labels made to last — labels meet BS-5609 certification²

Ease-of-use features — auto cutter, easy paper loading and an LCD with printer status readouts

Versatile media handling — print on plain, synthetic, matte and glossy; accommodates roll-fed or fanfold, die-cut or continuous label media

Reliability you can count on — backed by Epson's industry-leading service and support programs

Durable design — dust/water resistant; for high duty cycle environments

Print

Print Method MicroPiezo[®] inkjet technology, Automatic Nozzle Checking

Ink Type¹ Pigmented ink, 4 individual CMYK cartridges

Print Resolution 360 x 360 dpi — Speed Mode, 720 x 360 dpi — Quality Mode

Print Speed¹

360 dpi x 360 dpi — Banding Reduction disabled 4.0" per sec. (2.2" print width) 3.4" per sec. (4.1" print width)
360 dpi x 360 dpi — Banding Reduction enabled 3.7" per sec. (2.2" print width) 3.1" per sec. (4.1" print width)
720 dpi x 360 dpi — Banding Reduction enabled 2.0" per sec. (2.2" print width) 1.7" per sec. (4.1" print width)

Print Width 4.1" (104 mm) max.

Media Types Roll-fed or fanfold; die-cut or continuous; single layer or adhesive labels on liner; plain paper, fine paper, PET film, synthetic

Print Fonts

Barcode Font⁴ (Built-in Driver) UPC-A, UPC-E, JAN13(EAN), JAN8(EAN), Code39 (built-in driver), ITF, Codabar, Code93, Code128, GS1-128, GS1 DataBar Omnidirectional, GS1 DataBar Truncated, GS1 DataBar Limited, GS1 DataBar Expanded, PDF417, QR Code, Maxi Code, GS1 DataBar Stacked, GS1 DataBar Stacked Omnidirectional, GS1 DataBar Expanded Stacked, DataMatrix, Aztec Code

Media Dimensions

Width

Roll feed: 1.2" – 4.25" (30 – 108 mm)

Fan fold: 2.0" – 4.25" (50 – 108 mm)

Thickness 4.7 – 7.5 mil (0.12 – 0.19 mm)

Roll Size O.D. 4.0" (102 mm) max.

Core Diameter 1.75" – 2.25" (44 – 57 mm)

Media Sensors Gap, black mark, media cut

Die-cut Label Gap Min. 0.12" (3.0 mm)

Black Mark Size Min. 0.20" x 0.16" (5.0 x 4.0 mm) (W x H)

Connectivity

Interfaces USB 2.0 Hi-speed, Ethernet 10/100 Base-T

Operating Systems Microsoft[®] Windows[®] 10, Windows 8 (32-bit, 64-bit), Windows 7 SP1 (32-bit, 64-bit), Windows Vista[®] SP2 (32-bit, 64-bit), Windows XP SP3 (32-bit), Windows XP SP2 (64-bit)

General

Temperature

Operating: 10 ° to 35 °C
Storage: -20 ° to 40 °C

Relative Humidity

Operating: 20 – 80%
Storage: 5 – 85%

Acoustic Noise Level Approx. 58 dB (A)

Rated Voltage AC 100 – 240 VAC

Rated Frequency 50 – 60 Hz

Power Consumption

Printing: Approx. 30 W (mean, ISO/IEC 10561 letter)

Standby: Approx. 2.5 W (Sleep Mode)

Power Off: Approx. 0.3 W

Weight and Dimensions (W x D x H)

Printer: 12.2" x 11.1" x 10.3"

Shipping: 17.5" x 15.5" x 16.8"

Weight (without ink): Approx. 26.0 lb (12.2 kg)

Weight (shipping): Approx. 41.0 lb (18.6 kg)

Safety Approvals

Safety standards: UL60950-1/CSA C22.2 No.60950-1

EMI: FCC / ICES-003 Class B

What's in the Box ColorWorks C3500 printer, AC power adapter with line cord, full-capacity ink cartridges, sample label roll, media output tray, instruction sheet, CD with utilities and manuals

Ordering Information

TM-C3500 Inkjet Printer	C31CD54011
GJIC22P (C) Ink Cartridge (Cyan)	C33S020581
GJIC22P (K) Ink Cartridge (Black)	C33S020577
GJIC22P (M) Ink Cartridge (Magenta)	C33S020582
GJIC22P (Y) Ink Cartridge (Yellow)	C33S020583
SJMB3500 Maintenance Box	C33S020580

¹ Printing 2.2" (56 mm) width in Bi-directional Mode, with banding reduction disabled in 360 x 360 dpi resolution. | ² ColorWorks 3500 inkjet printer with DURABrite[®] pigment ink, used in combination with Neenah Kimdura[™] poly media, has been BS-5609 certified. | ³ Inkjet cartridge yields vary considerably for reasons including item printed, print settings, temperature and humidity. Yields may be lower when printing infrequently. A variable amount of ink remains in the cartridge after the "replace cartridge" signal. Ink from the first cartridge is used for priming the printer. Ink is used for both printing and printhead maintenance. | ⁴ No character font or 1D/2D code font installed.

Better Products for a Better Future[™]
eco.epson.com



Epson America, Inc.
3840 Kilroy Airport Way, Long Beach, CA 90806

Epson Canada Limited
185 Renfrew Drive, Markham, Ontario L3R 6G3

www.epson.com
www.epson.ca

Specifications and terms are subject to change without notice. EPSON, ColorWorks, DURABrite and MicroPiezo are registered trademarks, EPSON Exceed Your Vision is a registered logomark and Better Products for a Better Future is a trademark of Seiko Epson Corporation. Just In Time Color is a trademark of Epson America, Inc. Smartway is a registered trademark of the U.S. Environmental Protection Agency. All other product and brand names are trademarks and/or registered trademarks of their respective companies. Epson disclaims any and all rights in these marks.
Copyright 2016 Epson America, Inc. Com-SS-Oct-13 CPD-51795 6/16

Name

Email

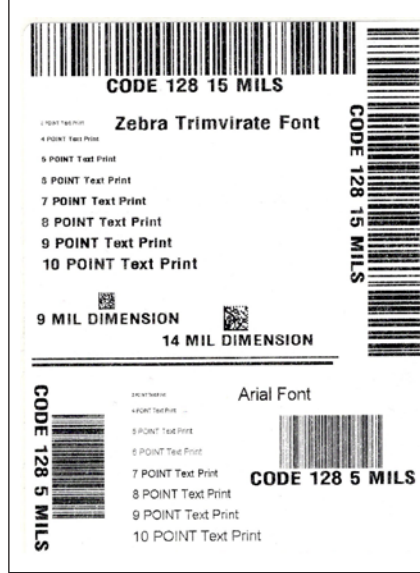
Phone Number

Competitive Comparisons

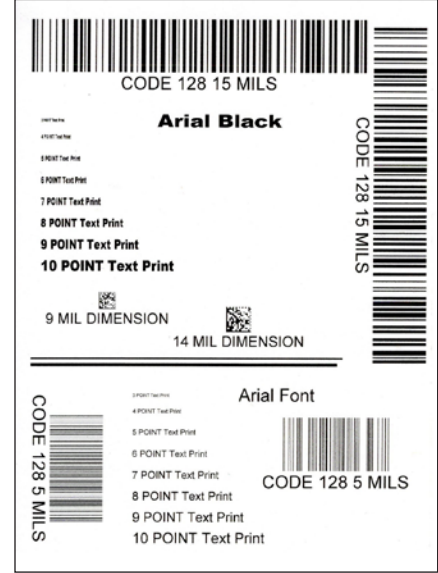
C6000 Series Print Quality Comparison vs. Thermal Transfer



Thermal transfer printer
at 14 ips



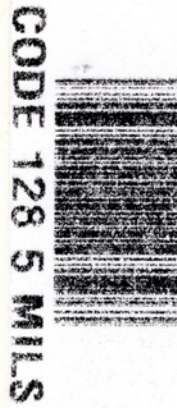
Thermal transfer printer
at 2 ips



Epson C6500A
at 4.7 ips

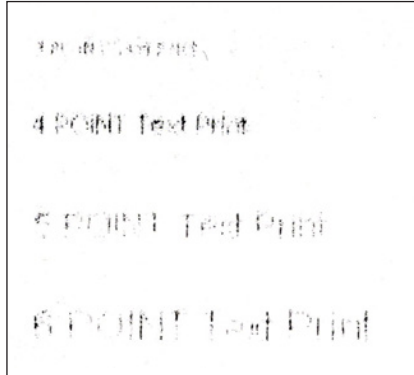
Printed on matte thermal transfer media at best settings using wax ribbon

Printed on plain non-inkjet paper in
lowest quality mode

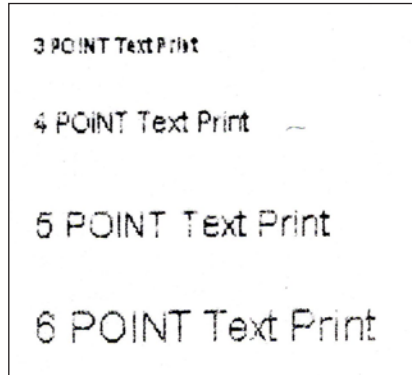


Competitive Comparisons

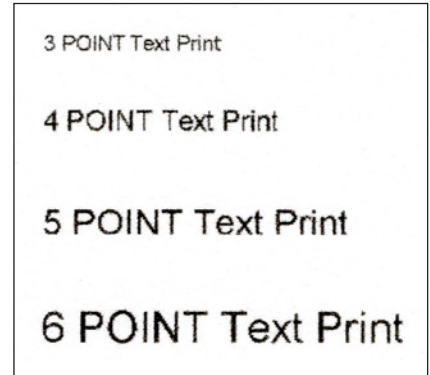
C6000 Series Print Quality Comparison vs. Thermal Transfer



Thermal transfer printer at 14 ips



Thermal transfer printer at 2 ips

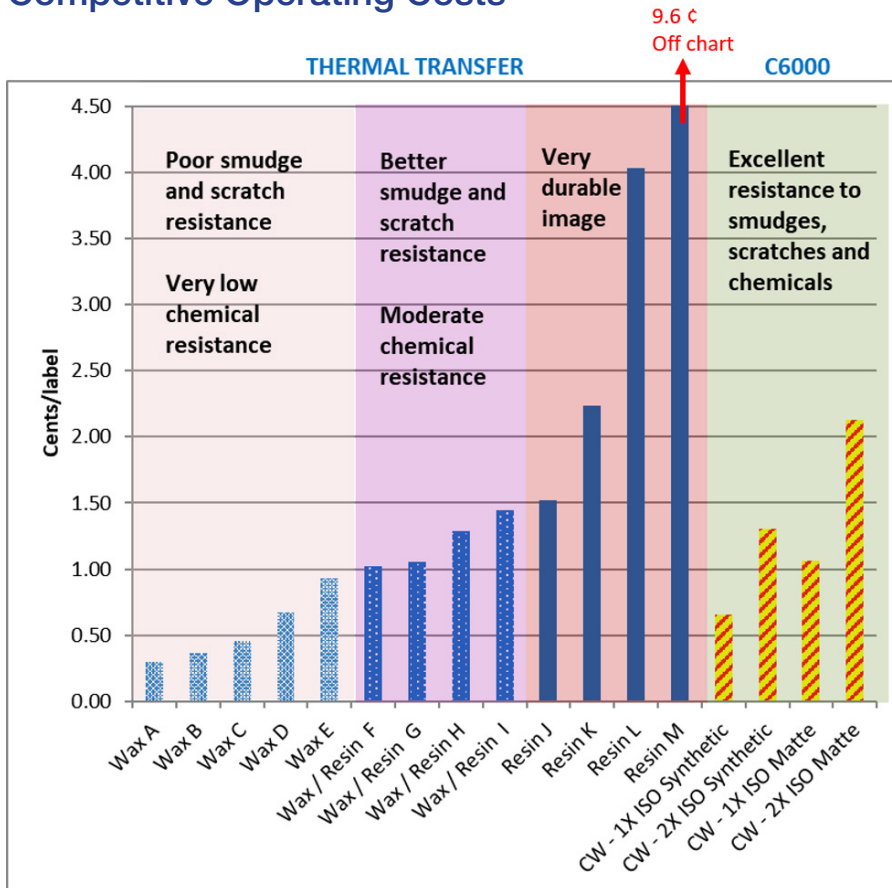


Epson C6500A at 4.7 ips

Printed on matte thermal transfer media at best settings using wax ribbon

Printed on plain non-inkjet paper in lowest quality mode

Competitive Operating Costs



Ink cost is comparable to thermal transfer.

For similar durability, ColorWorks costs less. Only bottom end of durability costs less for thermal.

Thermal transfer ribbon prices based on list price from leading thermal transfer manufacturer as of May 1, 2019.

ColorWorks pricing based on printing the ISO standard color test suite in Plain and Matte modes. 2X ISO is the cost to double the density of the ISO patterns. 2X ISO equals that of a typical GHS label.

Epson[®] ColorWorks[®] C6000 Series vs. Zebra, Afinia, Primera



Label Printers

Industrial

The Epson Advantage

- ✓ Reliable performance – Epson engineered for demanding, mission-critical applications
- ✓ First printer specifically designed as a color upgrade to thermal transfer
- ✓ Seamless integration – ZPL II[®], Major Middleware, SAP[®], Windows[®], Mac[®], Linux[™]
- ✓ Remote Printer Management – ideal for managing large fleets over a network
- ✓ World-class service and support with service locations all over North America and worldwide

Model Comparison	Epson ColorWorks C6000 Series	Zebra ZT610 ¹	Afinia L502 ¹	Primera LX2000 ¹
Technology	Epson MicroPiezo [®] Inkjet	Kyocera [®] /Rohm [®] -style Thin Film Thermal Transfer	HP [®] Thermal Inkjet	HP Inkjet
Native Resolution	1200 x 1200 dpi variable droplet size	203, 300, 600 dpi fixed dot size	4800 x 1200 dpi	1200 x 4800 dpi
Color	CMYK	Monochrome Black	CMYK	CMYK
Printhead Life	Permanent head lasts the life of the printer²	>1M lineal inches ⁴ (167K 4" x 6" labels)	Up to 1.9 L for Black ink and up to 2.3 L for CMY ink depending on environmental conditions	53 Black cartridges or 65 (of any) color cartridges, whichever comes first. Also varies based on usage conditions
Replacement Printhead Cost	Permanent	\$972 plus downtime and service fees	\$295 plus downtime and service fees	\$250 plus downtime and service fees
Auto Head Integrity Check	Nozzle Verification Technology	None	None	None
Ink/Ribbon Type	UltraChrome [®] DL pigment ink	Wax, wax/resin, or resin ribbon	Dye or pigment ink	Pigment ink
Price (MSRP)	\$2,580 - \$3,980	\$5,191	\$2,795	\$3,995
Estimated Minimum Printer Life	5 years	Not stated	Not stated	Not stated
Printer Dimensions (W x D x H)	13.4" x 22.2" x 12.8" (C6000) 17.5" x 20.3" x 12.8" (C6500)	10.6" x 19.9" x 15.6"	20.0" x 23.5" x 9.75"	19.5" x 20.5" x 10.2"
Paper Width Min - Max	1.0" - 4.4" (C6000) 1.0" - 8.5" (C6500)	0.79" - 4.5"	1.0" - 8.5"	1.5" - 8.375"
Media Types	Roll, fanfold, die-cut	Roll, fanfold, die-cut	Roll, die-cut	Roll, fanfold, die-cut
Cutter	Automatic	Automatic	Automatic	Built-in
BS5609 Certified	Yes ³	Yes ³	Yes ³	Yes ³
Printer Language	Epson ESC/Label, ZPL II emulation, Windows, Mac and Linux compatible	Windows compatible files, ZPL [®] , ZPL II	Windows compatible files	Windows and Mac compatible files
Maximum Print Speed	5 ips	14 ips at 203 dpi 12 ips at 300 dpi 6 ips at 600 dpi	5 ips	6 ips

www.epson.com/ColorWorks

Epson and competitor information based on manufacturer's specifications and pricing as of July 2020.

¹ Information about competitor products is based on published specifications from the competitor or its technology provider available as of 7/22/2020. | ² See Estimated Minimum Printer Life. | ³ Requires BS5609-certified label material for use with printer and ink system. | ⁴ Per Zebra's Thermal Printhead Life document, a properly maintained printhead lasts over 1M lineal inches.

Specifications and terms are subject to change without notice. EPSON, ColorWorks, MicroPiezo and UltraChrome are registered trademarks and EPSON Exceed Your Vision is a registered logomark of Seiko Epson Corporation. Mac is a trademark of Apple Inc., registered in the U.S. and other countries. Windows is either a registered trademark or trademark of Microsoft Corporation in the United States and other countries. All other product and brand names are trademarks and/or registered trademarks of their respective companies. Epson disclaims any and all rights in these marks. Com-CC-May-16 Copyright 2020 Epson America, Inc. CPD-60000 09/20

Confidential. This document is intended for internal use by Epson associates and partners.

See the latest innovations from Epson Business Solutions at www.epson.com/forbusiness

ColorWorks® C7500 Series inkjet label printers vs. QuickLabel, Afinia



Label Printers

Industrial

The Epson Advantage

- ✓ Reliable performance — rugged design and minimal maintenance
- ✓ Seamless integration — includes ZPL II® emulation
- ✓ Epson® DURABrite®/ UltraChrome® pigment ink for high-quality, durable, smudge resistant images
- ✓ Compatible with major middleware such as BarTender, Teklynx, Lofware and more
- ✓ World-class service and support with service locations all over North America and around the world

Model Comparison	Epson ColorWorks C7500 Series	Afinia L801 ¹	QuickLabel QL-120X ¹	Afinia L701 ¹
Technology	Epson PrecisionCore® Linehead MicroPiezo® Inkjet	Memjet™ Thermal Inkjet	Canon® Thermal Inkjet	Memjet Thermal Inkjet
Native Resolution	1200 x 600 dpi variable droplet size	1600 x 1600 dpi	1200 x 1200 dpi	1600 x 1600 dpi
Color	CMYK	CMYK	CMYK	CMYK
Printhead Life	Permanent head lasts the life of the printer²	Varies by usage and media width	Not stated	Varies by usage and media width
Replacement Printhead Cost	Permanent	\$395 plus downtime and service fees	\$699/color plus downtime and service fees	\$395 plus downtime and service fees
Head Integrity Check	Nozzle Verification Technology	Not stated	Automatic detection / cleaning	Not stated
Ink/Ribbon Type	Epson DURABrite pigment ink (C7500), UltraChrome pigment ink (C7500G)	Dye ink	Dye ink	Dye ink
Price (MSRP)	\$8,819	\$7,995	\$8,995	\$4,995
Estimated Minimum Printer Life	5 years ³	Not stated	Not stated	Not stated
Printer Dimensions (W x D x H)	15.4" x 23.5" x 15.6"	18.9" x 19" x 21.1"	22.2" x 24" x 15.5"	21.6" x 26.7" x 11.2" including unwinder
Paper Width Min - Max	2.0" - 4.4"	2.0" - 8.5"	1.0" - 4.5"	2.0" - 8.5"
Cutter	Automatic	Automatic	Automatic	Built-in
BS5609 Certified	Yes⁴	No	No	No
Printer Language	Epson ESC/Label, Windows® compatible and ZPL II emulation	Windows compatible	Windows compatible	Windows compatible
Maximum Print Speed	11.8 ips	12 ips	12 ips	8 ips

www.epson.com/ColorWorks

Epson and competitor information based on manufacturer's specifications and pricing as of July 2020.

¹ Information about competitor products is based on published specifications from the competitor or its technology provider available as of 7/22/2020. ² See under Estimated Minimum Printer Life. ³ Assumes printing 150 km (1 million 4" x 6" labels) over 5 years. ⁴ Requires BS5609-certified label material for use with printer and ink system.

Specifications and terms are subject to change without notice. EPSON, ColorWorks, DURABrite, MicroPiezo, PrecisionCore and UltraChrome are registered trademarks and EPSON Exceed Your Vision is a registered logomark of Seiko Epson Corporation. Windows is either a registered trademark or trademark of Microsoft Corporation in the United States and other countries. All other product and brand names are trademarks and/or registered trademarks of their respective companies. Epson disclaims any and all rights in these marks. Com-CC-May-16 Copyright 2020 Epson America, Inc. CPD-50928R2 10/20

Confidential. This document is intended for internal use by Epson associates and partners.

See the latest innovations from Epson Business Solutions at www.epson.com/forbusiness

ColorWorks® C3500 inkjet label printer vs. Afinia, Primera, Zebra



The Epson Advantage

- ✓ C3500 is easy to install, easy to work with, and reliable
- ✓ Epson® DURABrite® pigment ink for high-quality, durable, smudge-proof images
- ✓ Flexibility to handle various label sizes, high customization, and evolving label requirements
- ✓ Compatible with major middleware such as BarTender, Teklynx, Lofware, and more
- ✓ World-class service and support with service locations all over North America and worldwide

Model Comparison	Epson ColorWorks C3500	Afinia L301 ¹	Primera LX500 ¹	Zebra ZT410/ ZT411 ¹
Technology	Epson MicroPiezo® Inkjet	HP® Thermal Inkjet	Lexmark™ Thermal Inkjet	Kyocera/Rohm-style Thin Film Thermal Transfer
Native Resolution	720 x 360 dpi variable droplet size	4800 x 1200 dpi (color) 1200 x 1200 dpi (black)	4800 x 1200 dpi	203, 300, 600 dpi fixed dot size
Color	CMYK individual ink cartridges	Black single ink cartridge; Tri-color single ink cartridge	CMY,1 tri-color cartridge	Monochrome Black
Printhead Life	Permanent head lasts the life of the printer ²	300-600 labels ⁵	200-500 labels ⁶	>1M lineal inches ⁷ (167K 4" x 6" labels)
Replacement Printhead Cost	Permanent	Replace each time ink runs out (\$49.95)	Replace each time ink runs out (\$54.95)	\$1,418 plus downtime and service fees ⁸
Head Integrity Check	Nozzle Verification Technology	None	None	None
Ink/Ribbon Type	Epson DURABrite pigment ink	HP dye ink (Tri-color) and HP pigment ink (Black)	Dye ink	Wax, wax/resin, or resin ribbon
Price (MSRP)	\$1,919	\$1,595	\$1,395	\$1,765 - \$2,855
Estimated Minimum Printer Life	5 Years ³	Not stated	Not stated	5 Years
Printer Dimensions (W x D x H)	12.1" x 11.1" x 10.3"	19" x 21.5" x 7"	10.4" x 15.3" x 7.1"	10.6" x 19.5" x 12.75"
Paper Width Min - Max	1.97" - 4.0" (fanfold) 1.2" - 4.25" (roll)	1.75" - 6.0"	1.0" - 4.25"	1.0" - 4.5"
Cutter	Automatic	Manual	Automatic	Automatic
BS5609 Certified	Yes ⁴	No	No	No
Printer Language	Windows® compatible files	Windows compatible files	Windows and Mac® compatible files	Windows compatible files, ZPL®, ZPL II®, Ettron
Maximum Print Speed	4 ips	1.8 ips	2.5 ips	14 ips

www.epson.com/ColorWorks

Epson and competitor information based on manufacturer's specifications and pricing as of July 2020.

¹ Information about competitor products is based on published specifications from the competitor or its technology provider available as of 7/22/2020. ² See under Estimated Minimum Printer Life. ³ Assumes printing 150 km (1 million 4" x 6" labels) over 5 years. ⁴ Requires BS5609-certified label material for use with printer and ink system. ⁵ Based on a 4" x 3" label with best quality and resolution setting. Source: <https://www.durafastlabel.com/content/Ink%20Costs%20-%20Afinia%20Printers%20US.pdf> ⁶ Based on a 4" x 3" label with best quality and resolution setting. Source: <https://www.durafastlabel.com/content/Ink%20Costs%20-%20Primera%20Printers%20US.pdf> ⁷ Per Zebra's Thermal Printhead Life document, a properly maintained printhead lasts over 1M lineal inches. ⁸ List price for a ZT410 600 dpi printhead as of July 2020.

Specifications and terms are subject to change without notice. EPSON, ColorWorks, DURABrite and MicroPiezo are registered trademarks and EPSON Exceed Your Vision is a registered logomark of Seiko Epson Corporation. Mac is a trademark of Apple Inc., registered in the U.S. and other countries. Windows is either a registered trademark or trademark of Microsoft Corporation in the United States and other countries. All other product and brand names are trademarks and/or registered trademarks of their respective companies. Epson disclaims any and all rights in these marks. Com-CC-May-16 Copyright 2020 Epson America, Inc. CPD-50976R2 10/20

Confidential. This document is intended for internal use by Epson associates and partners.

See the latest innovations from Epson Business Solutions at www.epson.com/forbusiness

TCO Calculation Tool

This tool is intended to create a rough estimate of the various costs (inventory, operating, scrap) associated with 2-step printing vs. printing on an Epson C6000 series printer. It is intended to provide a baseline estimate and facilitate a conversation about total costs. Actual costs will be affected by print volume, media used, actual print pattern, and print modes. This tool is available on the Epson Partner Portal at: <https://epsonpartnerportal.com/colorworks-marketing-resources>

Thermal Transfer Printing Cost Analysis

Pre-printed color + thermal transfer black
4" x 6" matte paper



Sample label image

EPSON CONFIDENTIAL

Scenario 1: Small run (1,000 labels)

Hardware Investment	
Thermal transfer printer ¹	\$ 1,500.00
Total initial investment	\$ 1,500.00
Operating Costs	
Pre-printed color label ²	\$ 0.406
Thermal transfer printing cost ³	\$ 0.013
Total operating cost (per label)	\$ 0.419
Additional Consumables Costs	
Printhead replacement cost ¹⁰	\$ 1,235.33
# of lineal inches printed/year	1560000
# of printhead replacements/year ¹¹	0.78
Printhead cost per year	\$ 963.56
Inventory Cost	
# of label copies	50
Label run cost per copy ²	\$ 401.72
Cost of pre-printed labels	\$ 20,086.00
Inventory carrying cost ⁹	\$ 5,021.50
Total inventory cost	\$ 25,107.50
Waste	
% scrap due to label design change	15%
Approx label volume/day	1000
% scrap due to mismatch of label and print	5%
Annual cost of scrap⁸	\$ 8,453.40
Lead Time	2-3 weeks

Scenario 2: Average run (20,000 labels)

Hardware Investment	
Thermal transfer printer ¹	\$ 1,500.00
Total initial investment	\$ 1,500.00
Operating Costs	
Pre-printed color label ²	\$ 0.125
Thermal transfer printing cost ³	\$ 0.013
Total operating cost (per label)	\$ 0.138
Additional Consumables Costs	
Printhead replacement cost ¹⁰	\$ 1,235.33
# of lineal inches printed/year	1560000
# of printhead replacements/year ¹¹	0.78
Printhead cost per year	\$ 963.56
Inventory Cost	
# of label copies	50
Label run cost per copy ²	\$ 2,729.26
Cost of pre-printed labels	\$ 136,463.00
Inventory carrying cost ⁹	\$ 34,115.75
Total inventory cost	\$ 170,578.75
Waste	
% scrap due to label design change	15%
Approx label volume/day	1000
% scrap due to mismatch of label and print	5%
Annual cost of scrap⁸	\$ 22,256.95
Lead Time	2-3 weeks

Scenario 3: Epson ColorWorks

Hardware Investment	
Epson CW-6000A printer ⁴	\$ 2,580.00
Total initial investment	\$ 2,580.00
Operating Costs	
Label cost ⁵	\$ 0.053
Ink cost ⁶	\$ 0.032
Total operating cost (per label)	\$ 0.085
Additional Consumables Costs	
Printhead replacement cost ¹⁰	\$ -
# of lineal inches printed/year	1560000
# of printhead replacements/year ¹¹	0
Printhead cost per year	\$ -
Inventory Cost	
# of label copies	50
Label run cost per copy ²	N/A
Cost of pre-printed labels	\$ -
Blank label inventory ⁷	\$ 2,650.00
Inventory carrying cost ⁹	\$ 662.50
Total inventory cost	\$ 3,312.50
Waste	
% scrap due to label design change	5%
Approx label volume/day	1000
% scrap due to mis-alignment of label and print	0%
Annual cost of scrap⁸	\$ 165.63
Lead Time	0 days

Initial Investment + Operating Costs in 1st Year	Initial Investment + Operating Costs in 1st Year	Initial Investment + Operating Costs in 1st Year
\$ 124,748.46	\$ 94,586.26	\$ 25,508.13

Assumptions/ Basis

- Based on an average market price of Zebra ZT410 as of March 2020.
- Based on the average of quotes from 3 different label suppliers.
- Based on Wax/Resin 3200, which provides moderate durability and moderate resistance to chemicals, scratches and smudging.
- MSRP price of Epson CW-6000A printer as of March 2020.
- Average retail price for 4" x 6" matte inkjet paper labels among 4 leading label suppliers as of March 2020.
- Based on ink cost calculation for label image shown above, on 4"x6" matte paper, printing with quality mode.
- Assume 10 weeks worth of inventory at approx run volume (line 37).
- Based on 5 day workweek (260 working days/year).
- Per APICS, a globally recognized supply chain organization, inventory carrying costs average 25-55%. Used 25% to be conservative.
- Inventory carrying costs consist of costs related to capital investment, insurance, physical handling, taxes, storage space, clerical & inventory control, damage, shrinkage, etc.
- Based on average published price for a ZT410 600 dpi printhead as of May 2020; see 'Printhead costs' tab.
- Assume a Zebra printhead lasts 2 million lineal inches. Per Zebra's Thermal Printhead Life document, a properly maintained printhead lasts over 1M lineal inches.

Warranty and Service Offerings

Included: 1-Year Depot Repair Warranty

- Epson's industry-leading whole-unit repair and return process
- Printer shipped to Epson at end user's expense
- All components tested upon receipt. Necessary service and repair performed. Unit returned with Epson-paid ground shipping
- To ensure the least disruption of service, depot repair typically performed in 3 days

Service Upgrade Options (purchase through distributor)

- Purchase in 1-year increments
- Initial year must be purchased within 30 days of hardware purchase
- Subsequent years must be purchased while the previous service plan is still in effect

ExtendedCareSM Depot Repair

- Extends depot repair coverage beyond the standard 1-year limited warranty

On-site Service

- Service technician travels next business day to end-user site to fix printer

Spare-in-the-AirTM (SITA)

- Upon customer call, replacement unit is shipped overnight
- Customer returns original printer in box provided
- Shipping both ways paid by Epson

For more information, go to: <https://epson.com/Support/sl/s>

Service Upgrade Offerings Available for Each Printer:

Printer	ExtendedCare Depot Repair	SITA	On-site Service
C6000/C6500 series	✓	✓	✓
C7500 series	✓	✗	✓
C3500	✓	✓	✗

Distributors

BlueStar

3345 Point Pleasant Road
Hebron, KY 41048
(800) 354-9776
epson@bluestarinc.com



<https://www.bluestarinc.com>

ScanSource

6 Logue Court
Greenville, South Carolina 29615
(800) 944-2432
leads@scansource.com



<https://www.scansource.com>

Metropolitan Sales

238 Atlantic Avenue
Lynbrook, NY 11563
(800) 638-3478
info@metsales.com



<https://www.metsales.com>

ProFocus ColorWorks MSRP Price List

10/19/2020

MODEL	PROD CODE	FEATURE	UNILATERAL PRICE ¹	MSRP PRICE
PRINTERS				
<i>Discount</i>				
CW-C6000A	C31CH76101	4-inch color label printer - Auto cutter	N/A	\$ 2,580
CW-C6000P	C31CH76201	4-inch color label printer - Peeler	N/A	\$ 3,050
CW-C6500A	C31CH77101	8-inch color label printer - Auto cutter	N/A	\$ 3,500
CW-C6500P	C31CH77201	8-inch color label printer - Peeler	N/A	\$ 3,980
TM-C3500	C31CD54011	4-inch color label printer - DHCP	N/A	\$ 1,919
TM-C7500	C31CD84011	4-inch color label printer - Matte	N/A	\$ 8,819
TM-C7500G	C31CD84311	4-inch color label printer - Gloss	N/A	\$ 8,819

ACCESSORIES				
<i>Discount</i>				
Media Spindle 4"	C32C881301	Extra media spindle for 4" printers	N/A	\$ 98
Media Spindle 8"	C32C881101	Extra media spindle for 8" printers	N/A	\$ 98
TU-RC7508 Take-up Unit	C32C815471	Take-up for C7500 / C7500G	N/A	\$ 749

INK				
<i>Discount</i>				
SJIC35P(BK)	C13T44B120	6000/6500 Ink - Black - Gloss	\$ 45.50	\$ 45.50
SJIC35P(MK)	C13T44B520	6000/6500 Ink - Black - Matte	\$ 45.50	\$ 45.50
SJIC35P(C)	C13T44B220	6000/6500 Ink - Cyan	\$ 45.50	\$ 45.50
SJIC35P(M)	C13T44B320	6000/6500 Ink - Magenta	\$ 45.50	\$ 45.50
SJIC35P(Y)	C13T44B420	6000/6500 Ink - Yellow	\$ 45.50	\$ 45.50
SJMB6000/6500	C33S021501	6000/6500 Maintenance Box	\$ 30.00	\$ 30.00
SJIC22P(K)	C33S020577	3500 Ink - Black	\$ 18.00	\$ 18.00
SJIC22P(C)	C33S020581	3500 Ink - Cyan	\$ 18.00	\$ 18.00
SJIC22P(M)	C33S020582	3500 Ink - Magenta	\$ 18.00	\$ 18.00
SJIC22P(Y)	C33S020583	3500 Ink - Yellow	\$ 18.00	\$ 18.00
SJMB3500	C33S020580	3500 Maintenance Box	\$ 30.00	\$ 30.00
SJIC26P(K)	C33S020614	7500 Ink - Black - Matte ⁷	\$ 163.00	\$ 163.00
SJIC26P(C)	C33S020615	7500 Ink - Cyan - Matte ⁷	\$ 163.00	\$ 163.00
SJIC26P(M)	C33S020616	7500 Ink - Magenta - Matte ⁷	\$ 163.00	\$ 163.00
SJIC26P(Y)	C33S020617	7500 Ink - Yellow - Matte ⁷	\$ 163.00	\$ 163.00
SJIC30P(K)	C33S020635	7500G Ink - Black - Gloss ⁷	\$ 163.00	\$ 163.00
SJIC30P(C)	C33S020636	7500G Ink - Cyan - Gloss ⁷	\$ 163.00	\$ 163.00
SJIC30P(M)	C33S020637	7500G Ink - Magenta - Gloss ⁷	\$ 163.00	\$ 163.00
SJIC30P(Y)	C33S020638	7500G Ink - Yellow - Gloss ⁷	\$ 163.00	\$ 163.00
SJMB7500	C33S020596	7500 / 7500G Maintenance Box	\$ 31.00	\$ 31.00

MEDIA				
<i>Discount</i>				
Premium Matte (box of 6 rolls)	C35MD001	3500 Media - 4" x 2" die cut (565 labels/roll)	N/A	\$ 84.00
Premium Matte (box of 6 rolls)	C35MD002	3500 Media - 4" x 3" die cut (400 labels/roll)	N/A	\$ 84.00
Premium Matte (box of 6 rolls)	C35MD003	3500 Media - 4" x 6" die cut (200 labels/roll)	N/A	\$ 84.00
Premium Matte (box of 6 rolls)	C35MD004	3500 Media - 3" x 2" die cut (565 labels/roll)	N/A	\$ 88.00
Premium Matte (box of 6 rolls)	C35MD005	3500 Media - 3" x 5" die cut (240 labels/roll)	N/A	\$ 68.50
Premium Matte (box of 6 rolls)	C35MC001	3500 Media - 2" x 105' continuous label	N/A	\$ 53.50
Premium Matte (box of 6 rolls)	C35MC002	3500 Media - 3" x 105' continuous label	N/A	\$ 75.00
Premium Matte (box of 6 rolls)	C35MC003	3500 Media - 4" x 105' continuous label	N/A	\$ 81.00
Premium Matte (box of 6 rolls)	C35MC004	3500 Media - 4-1/8" x 105' continuous lbl	N/A	\$ 101.50
<i>More media on next page</i>				

ProFocus ColorWorks MSRP Price List (continued)

10/19/2020

MODEL	PROD CODE	FEATURE	UNILATERAL PRICE ¹	MSRP PRICE
High Gloss (box of 6 rolls)	C35GD001	3500 Media - 4" x 2" die cut (540 labels/roll)	N/A	\$ 143.50
High Gloss (box of 6 rolls)	C35GD002	3500 Media - 4" x 3" die cut (380 labels/roll)	N/A	\$ 143.50
High Gloss (box of 6 rolls)	C35GD003	3500 Media - 4" x 6" die cut (190 labels/roll)	N/A	\$ 143.50
High Gloss (box of 6 rolls)	C35GD004	3500 Media - 3" x 2" die cut (540 labels/roll)	N/A	\$ 117.00
High Gloss (box of 6 rolls)	C35GD005	3500 Media - 3" x 5" die cut (230 labels/roll)	N/A	\$ 106.00
High Gloss (box of 6 rolls)	C35GC001	3500 Media - 2" x 100' continuous label	N/A	\$ 80.00
High Gloss (box of 6 rolls)	C35GC002	3500 Media - 3" x 100' continuous label	N/A	\$ 107.00
High Gloss (box of 6 rolls)	C35GC003	3500 Media - 4" x 100' continuous label	N/A	\$ 138.00
Durable Matte Synthetic (box of 6 rolls)	C35CD001	3500 Media - 4" x 2" die cut (400 labels/roll)	N/A	\$ 174.50
Durable Matte Synthetic (box of 6 rolls)	C35CD002	3500 Media - 4" x 3" die cut (285 labels/roll)	N/A	\$ 174.50
Durable Matte Synthetic (box of 6 rolls)	C35CD003	3500 Media - 4" x 6" die cut (145 labels/roll)	N/A	\$ 174.50
Durable Matte Synthetic (box of 6 rolls)	C35CD004	3500 Media - 3" x 2" die cut (400 labels/roll)	N/A	\$ 203.00
Durable Matte Synthetic (box of 6 rolls)	C35CD005	3500 Media - 3" x 5" die cut (170 labels/roll)	N/A	\$ 203.00

REPLACEMENT BOXES				
<i>Discount</i>				
CW-C6000A/C6000P	BOX-C6000	C6000 SERIES BOX AND PACKAGING	N/A	\$ 54.81
CW-C6500A/C6500P	BOX-C6500	C6500 SERIES BOX AND PACKAGING	N/A	\$ 76.73
TM-C3500	BOX-C3500	C3500 BOX AND PACKAGING	N/A	\$ 26.03
TM-C7500/C7500G	BOX-C7500	C7500 SERIES BOX AND PACKAGING	N/A	\$ 94.66
GP-C831	BOX-C831	C831 BOX AND PACKAGING	N/A	\$ 29.10
SERVICE PLANS				
<i>Discount</i>				
EXTENDED CARE ^{2,3,4,6}				
One-year ExtendedCare - Depot Repair - price per year				
TM-C3400, TM-C3500	ECTMB-I	Available years 2 & 3		\$ 95.95
GP-C831, GP-M831 & TM-C3400-LT	ECTMC-I	Available years 2 & 3		\$ 135.95
CW-C6000/C6500	ECTMC-I	Available years 2 to 5		\$ 135.95
TM-C7500	ECTME-I	Available years 2 to 4		\$ 549.95
Two-year ExtendedCare - Depot Repair - price for two years				
TM-C3400, TM-C3500	ECTMB-II	Covers years 2 & 3		\$ 135.95
GP-C831, GP-M831 & TM-C3400-LT	ECTMC-II	Covers years 2 & 3		\$ 195.95
TM-C3500	ECTME2-II	Covers years 4 & 5		\$ 325.00
SITA ^{2,3,4,5,6}				
Spare-in-the-Air Printer Exchange Program - price per year				
TM-C3400, TM-C3500	SITATMB-I	Available years 1 to 3		\$ 61.52
GP-C831, GP-M831 & TM-C3400-LT	SITATMC-I	Available years 1 to 3		\$ 99.99
TM-C3500	SITATME2-I	Available years 4 & 5		\$ 175.00
CW-C6000/C6500	SITATMD-I	Available years 1 to 5		\$ 271.23
ON-SITE EXTENDED CARE ^{2,3,4,5,6,8}				
On-site Program Pricing - price per year				
TM-C7500/C7500G/C7500GE	OSTME-I	Available years 1 to 4		\$ 699.00
CW-C6000/C6500	OSTME-I	Available years 1 to 5		\$ 699.00

- 1 - Products with a price in this column are covered by an Epson Unilateral Price policy. Please refer to the written policy for specific details and guidance.
- 2 - Must be purchased with new printers within the first 30 days of the factory 1-year limited warranty period.
- 3 - Service plans can be renewed later for additional years, as long as a previous service plan is still in effect.
- 4 - Select only one service option per printer and do not combine.
- 5 - Standard warranty for C3400, C3500, C831, C7500 and C7500G is 1-year depot repair. An On-site or SITA plan must be purchased for year 1 if enhanced service is desired.
- 6 - For service options beyond the time limits described above, contact Epson for a quote.
- 7 - SJIC26P ink cannot be used in C7500G gloss models and SJIC30P ink cannot be used in C7500 matte printers.
- 8 - C7500GE comes standard with first-year on-site warranty.

Advantage of Selling Color

How do you convince a customer to replace all their old B&W printers with new B&W printers?

- Will the new printer do anything better? **No**
- Will it save them time or money? **No**
- Will it help improve their efficiency? **No**
- Will it help grow revenue? **No**
- Will it cost a lot? **Yes**

It's a Tough Value Proposition

Improve a customer's business with color:

- Eliminate waste of pre-printed labels **Yes**
- Color code to reduce errors **Yes**
- Add pictures to reduce errors and help identify products **Yes**
- Improved branding to grow sales **Yes**
- Enable private brands and customization **Yes**
- Eliminate hassles of ribbons and thermal transfer **Yes**

Epson offers reasons to switch to ColorWorks

**Epson is offering a business improvement
with ColorWorks products.**



Epson Business Solutions

Epson is a leading provider of innovative technology solutions that help businesses succeed. We partner with you to best meet your specific needs, focusing on:

- Improved productivity
- World-class customer service and support
- Cost-effective, high-quality solutions
- A commitment to the environment

Discover how Epson can help you work toward the future. www.epson.com/forbusiness

 **Better Products for a Better Future™**
eco.epson.com

Epson America, Inc.
3131 Katella Ave., Los Alamitos, CA 90720

Epson Canada Limited
185 Renfrew Drive, Markham, Ontario L3R 6G3

www.epson.com
www.epson.ca

Contact:

Specifications and terms are subject to change without notice. EPSON, ColorWorks, PrecisionCore, TFP and UltraChrome are registered trademarks, EPSON Exceed Your Vision is a registered logomark and Better Products for a Better Future is a trademark of Seiko Epson Corporation. ExtendedCare is a service mark and Spare-in-the-Air is a trademark of Epson America, Inc. All other product and brand names are trademarks and/or registered trademarks of their respective companies. Epson disclaims any and all rights in these marks. Copyright 2020 Epson America, Inc. CPD-51287R5 10/20