



MAGELLAN™ 9550i

45% faster, less power than a lightbulb

The **Magellan 9550i** is the newest model in Datalogic's bi-optic scanner line-up, offering a value for money product without compromising on quality and advanced performance. This next-generation scanner combines cutting-edge technology, affordability, and enhanced customer experiences, addressing the continually changing needs of the retail industry.

The Magellan™ 9550i offers 45% faster 2D scanning than our previous Magellan bi-optic generation and less than 3W* of power consumption. It is also equipped with a range of features to improve operations, including:

- **All-Weighs™ Scale Platter:** An innovative weighing surface that ensures accurate measurement of produce, including oversized items that can be placed on top of the bonnet.
- **Optional USB Color Camera:** In-bonnet camera support for AI-powered workflows such as produce recognition, when paired with external AI software, offering retailers powerful loss prevention capabilities.

**in Eco-mode configuration*



Magellan 9550i

TOP REASONS TO CHOOSE MAGELLAN 9550i



HIGH PERFORMANCE

45% faster 2D scanning than the previous generation. 14% faster than the previous generation in 1D, even for damaged barcodes.

SUSTAINABILITY MINDED

Less than 3W* of power consumption for reduced total cost of ownership and increased sustainability while maintaining excellent performance.

**in Eco-mode configuration*

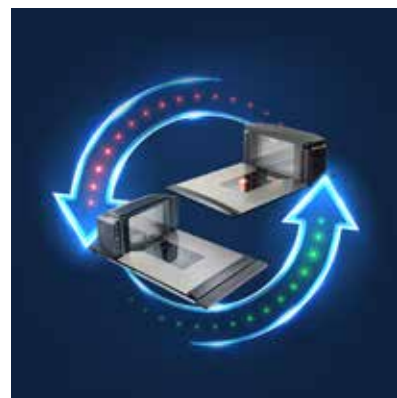


READY FOR THE FUTURE

The Magellan 9550i is ready for GS1 2D Digital Link for the ultimate in traceability.

DROP-IN REPLACEMENT

Easy drop-in replacement for previous generation scanners.

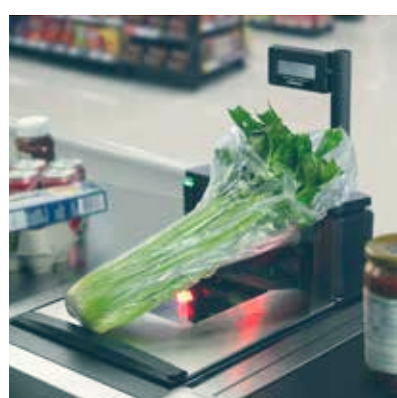


READY FOR THE REAL WORLD

Tested to guarantee high durability and resistance to liquids, scratches, and heavy daily use.

PREVENT LOSS AT CHECKOUT

Support for EAS tag deactivation, All-Weights Platter, and Optional In-Bonnet USB Color Camera



www.datalogic.com

GLOBAL NETWORK

DATALOGIC
EMPOWER YOUR VISION

AFRICA
marketing.africa@datalogic.com

AUSTRALIA & NEW ZEALAND
marketing.apac@datalogic.com

CHINA
marketing.cn@datalogic.com

EASTERN EUROPE
marketing.ee@datalogic.com

FRANCE & BENELUX
marketing.fr@datalogic.com

GERMANY, AUSTRIA & SWITZERLAND
marketing.de@datalogic.com

GREECE
marketing.gr@datalogic.com

INDIA
marketing.in@datalogic.com

ISRAEL
marketing.il@datalogic.com

ITALY
marketing.it@datalogic.com

JAPAN
marketing.jp@datalogic.com

KOREA
marketing.kr@datalogic.com

MIDDLE EAST
marketing.me@datalogic.com

SOUTHEAST ASIA
marketing.sea@datalogic.com

SPAIN & PORTUGAL
marketing.es@datalogic.com

TURKEY
marketing.tr@datalogic.com

UK & NORDIC COUNTRIES
marketing.uk@datalogic.com

USA, CANADA, MEXICO & LATIN AMERICA
marketing.na@datalogic.com