

# Magellan<sup>TM</sup> 9550i

**45% faster,  
less power than  
a lightbulb**

# FOCUS ON THE NEW MAGELLAN 9550i

The **Magellan 9550i** is the newest model in Datalogic's multi-plane scanner line-up, offering a value for money product without compromising on quality and advanced performance. This next-generation scanner combines cutting-edge technology, affordability, and enhanced customer experience, addressing the continually changing needs of the retail industry. The Magellan™ 9550i offers 45% faster 2D scanning than our previous Magellan multi-plane generation and less than 3W\* of power consumption.

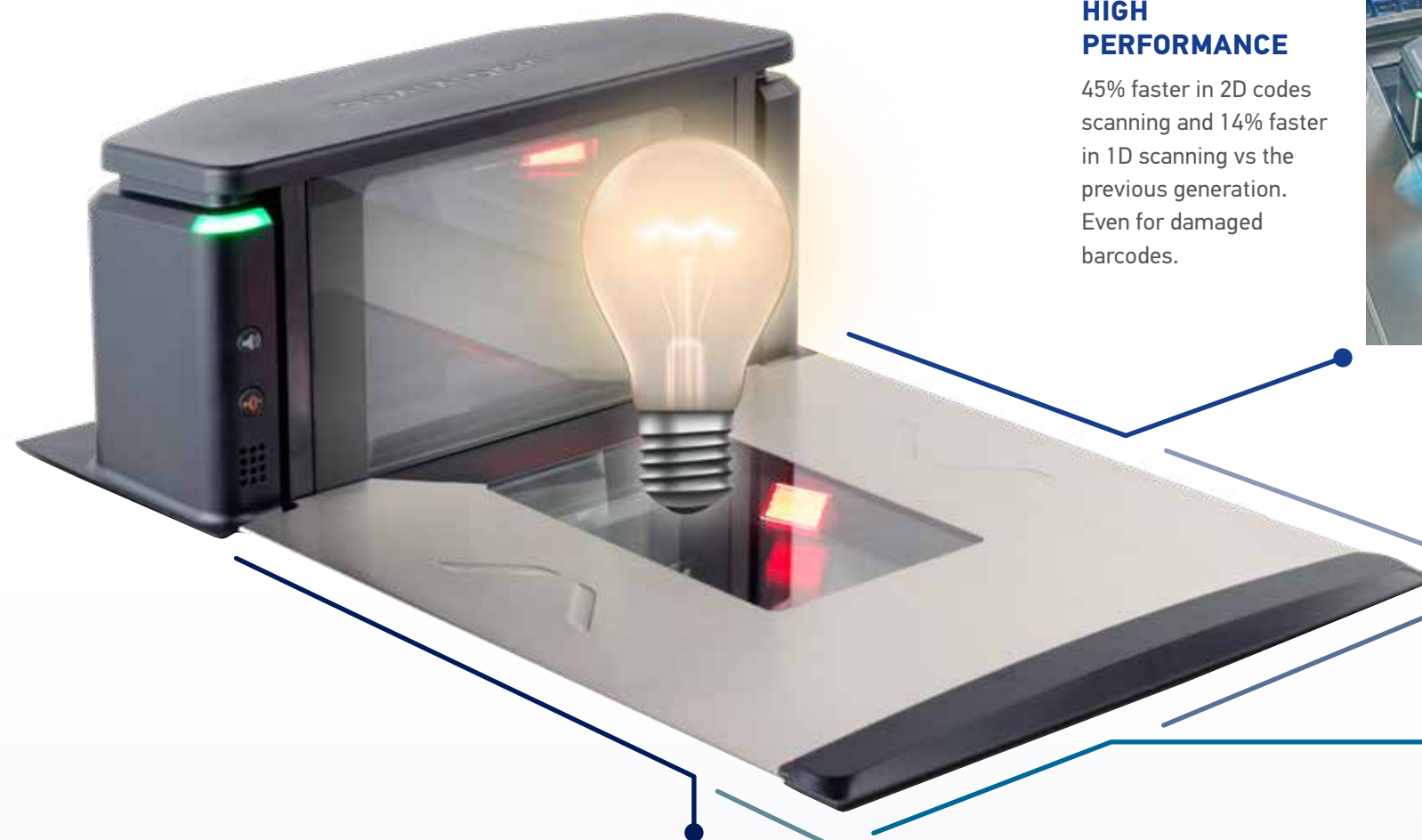
## Magellan 9550i

The Magellan 9550i is also equipped with a range of features to improve operations, including:

- **All-Weighs™ Scale Platter:** An innovative weighing surface that ensures accurate measurement of produce, including oversized items that can be placed on top of the bonnet.
- **Optional USB Color Camera:** In-bonnet camera support for AI-powered workflows such as produce recognition, when paired with external AI software, offering retailers powerful loss prevention capabilities.

*\*in Eco-mode configuration*

## TOP REASONS TO CHOOSE MAGELLAN 9550i



### HIGH PERFORMANCE

45% faster in 2D codes scanning and 14% faster in 1D scanning vs the previous generation. Even for damaged barcodes.



### LESS POWER THAN A LIGHTBULB

Less than 3W\* of power consumption for reduced total cost of ownership and increased sustainability while maintaining excellent performance.

*\*in Eco-mode configuration*



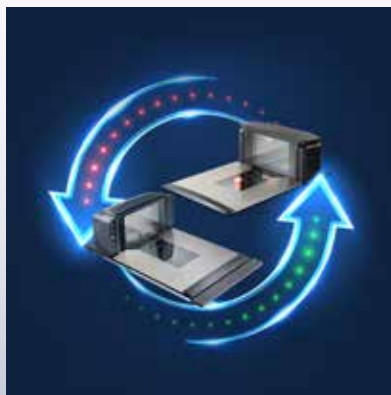
### READY FOR THE FUTURE

The Magellan 9550i is ready for GS1 2D Digital Link for the ultimate in traceability.



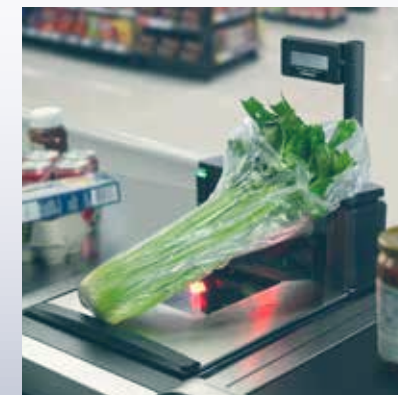
### DROP-IN REPLACEMENT

Easy drop-in replacement for previous generation scanners.



### READY FOR THE REAL WORLD

Tested to guarantee high durability and resistance to liquids, scratches, and heavy daily use.



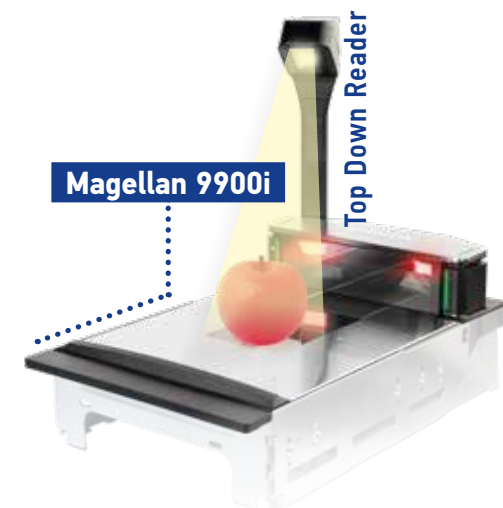
### PREVENT LOSS AT CHECKOUT

Support for EAS tag deactivation, All-Weighs Platter, and Optional In-Bonnet USB Color Camera



# The powerful multi-plane family

The new Magellan series of multi-plane scanners incorporate powerful innovations versus previous multi-plane generation: they are not only barcode scanners with superior scanning speed but they go beyond, featuring optional color cameras they also enhance produce recognition & assurance, enable ticket switching, and enables to scan avoidance to help retailers reduce shrinkage.



### MAGELLAN 9900i

The Magellan™ 9900i scanner and scanner/scale offer a 30% smaller bonnet and true top down and customer facing reading. The new portfolio includes options that enable Artificial Intelligence (AI) at the checkout putting the Magellan™ 9900i in a class of its own. The ability to choose from 3 chassis lengths allows a tailored solution that solves all checkout needs.



### MAGELLAN 9600i

Fresh styling, rugged design and new options that enable Artificial Intelligence (AI) at the checkout put the Magellan™ 9600i portfolio in a class of its own. The ability to choose from 3 chassis lengths and multiple check stand mount options allows a tailored solution that solves all assisted and self-checkout needs.



### MAGELLAN 9550i

Designed for excellent performance and low power consumption. The Magellan 9550i delivers a low Total Cost of Ownership and outstanding scanning of 1D and 2D barcodes. GS1 2D Digital Link ready out-of-the-box.

# Innovation meets sustainability

## Multi-plane family is built-to-last

- Datalogic's Magellan series barcode scanners are engineered to deliver exceptional durability and performance, while also aligning with environmental sustainability goals



## Sustainability minded

- Less than 3W\* of power consumption for reduced total cost of ownership
- Continuous software releases with updates to libraries and any functions requested by the customer.
- Magellan 9550i is compatible with cables from the previous generation.

## Leading with green choices

- Outer packaging is biodegradable
- Digital User Manual (no printed version)

## No toxic substances

- Complies with global ROHS and REACH standards
- Free from PFO/PFOAS in compliance with latest PFAS legislation
- Free from mercury
- Free from latex

## Efficiency requirements

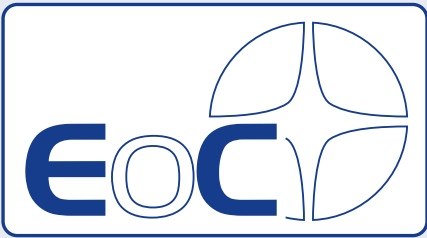
- Power source adaptor compliant with US Department of Energy (DoE) and international efficiency requirements

*\*in Eco-mode configuration*

# Service programs

Datalogic's EASEOFCARE Service Programs provide superior life-cycle support to ensure that products are always operating at peak performance.

Our market-leading Care programs are a key reason for customers to choose and keep Datalogic products, maximizing their uptime and lifecycle so that they can also be assured that their software is always running on a healthy and reliable device.



**FAST REPAIR TURNAROUND**  
(OVERNIGHT / 2 DAYS / 3 DAYS / 5 DAYS)



**ACCIDENTAL DAMAGE COVERED**  
BY COMPREHENSIVE PACKAGE  
(OR OPTION)



**BOTH WAYS FREIGHT PAID BY DATALOGIC\***



**3-5 YEARS CONTRACT SERVICE OPTIONS**

*\* on overnight/2days only*





# Technical specifications



## FEATURES

- Better 1D and 2D performance than our previous generation multi-plane as well as out-of-the-box support for GS1 2D Digital Link.
- Available with a dedicated Magellan Customer Service Scanner (CSS) with omni-mount for reading cell phones, coupons and loyalty cards
- Magellan 9550i multi-plane form factor is compatible with traditional checkstands and scanning techniques, providing a competitively priced, high-performance scanning experience
- Available with factory installed scales in pre-verified and on-site certifiable versions and models for integration with local scale manufacturer solutions
- EASEOFCARE Service Plans offer a wide range of service options to protect your investment, ensuring maximum productivity and ROI

### HIGH PERFORMANCE AND COST SAVINGS

The Magellan 9550i is the new addition to the range of powerful multi-plane scanners. It is the perfect value for money solution that offers the lowest power consumption on the market, without compromising performance.

The Magellan 9550i delivers 2D code reading that is an impressive 45% faster than the previous Magellan multi-plane generation and supports GS1 digital link.

### DROP-IN REPLACEMENT

Magellan 9550i utilizes the same form-factor as our other Magellan multi-planes and is a simple drop-in replacement for any of the previous generation products. Additionally the 9550i uses the same power supply, scale display, and interface cables as 93/94/96/99 making stocking accessories easier.

### SUPPORT TO LOSS PREVENTION

The 9550i includes the All-Weighs platter design for weighing accuracy as well as an optional in-bonnet USB color camera that supports AI workflows when paired with an external PC.

### ENTERPRISE FEATURES

Remote Management is supported for OPOS, JavaPOS on Windows or Linux-based systems.

## INDUSTRY - APPLICATION

### All-Weighs Scale Platter

- The All-Weighs scale platter design provides an alternative weighing surface on top of the bonnet, allowing the user to lay produce that is too long to fit on the platter.

### USB Color Camera

- In-Bonnet USB Color Camera means that retailers can take advantage of new AI workflows like Produce Recognition.

## ACCESSORIES



Multiple options available in English or Metric units

DECODING CAPABILITY	
<i>1D / Linear Codes</i>	Autodiscriminates all standard 1D codes including GS1 DataBar™ linear codes.
<i>Stacked Codes</i>	EAN/JAN Composites; GS1 DataBar Composites; GS1 DataBar Expanded Stacked; GS1 DataBar Stacked; GS1 DataBar Stacked Omnidirectional; MicroPDF417; PDF417; UPC A/E Composites
<i>2D Codes</i>	Aztec Code; Data Matrix; QR Code, Micro QR Code
ELECTRICAL	
<i>Power Requirements</i>	Scanner Power Consumption: 12 VDC Operating (Nominal): 2.6 Watts; Idle (Nominal): 1.7 Watts*; Optional scanner DC brick: AC Input: 100 - 240 VAC, 50-60 Hz
ENVIRONMENTAL	
<i>Ambient Light</i>	0-86,080 lux
<i>ESD Protection (Air Discharge)</i>	25 kV
<i>Humidity (Non-Condensing)</i>	5 - 95%
<i>Temperature</i>	Operating: 10 to 40 °C / 50 to 104 °F Storage/Transport: -40 to 70 °C / -40 to 158 °F
INTERFACES	
<i>Auxiliary Ports</i>	Remote Scale Display EAS Controller Port Powered USB Host (Type A) (x2)
<i>Multi-Interface</i>	RS-232 Single Cable/Dual Cable USB COM/OEM/Keyboard USB Single Cable COM
<i>Remote Management Capabilities</i>	Diagnostic Reporting; WMI (OPOS and JavaPOS) and MBeans (JavaPOS) compliant Host Download, Toshiba Remote Management Agent, DLRMUS, and other ERP management Solutions
LOSS PREVENTION	
<i>All-Weighs Scale Platter</i>	Integrated horizontal and vertical scale platter surfaces increase active weighing area for easy, accurate weighing of large items.
<i>EAS Features</i>	Integrated EAS Antenna for Checkpoint and Nedap. Sensormatic Deactivation Controller
<i>USB Color Camera</i>	The in-bonnet USB color camera allows retailers to take advantage of image capture or AI anti-shrink workflows like Produce Recognition 1MP imager (1280 x 800 px)

\*Value reported in Eco Mode configuration.

OPTIONAL FEATURES	
<i>Dual Interval Scale</i>	Minimum Increment: Range 1: 0.002 kg / 0.005 lb; Range 2: 0.005 kg / 0.010 lb Scale Capacity: Range 1: 0 - 6.0 kg / 0 - 15.0 lb; Range 2: 6.0 - 15.0 kg / 15.0 - 30.0 lb
<i>Single Interval Scale</i>	Minimum Increment: 0.005 kg / 0.010 lb; Scale Capacity: 0 - 15.0 kg / 0 - 30.0 lb
PHYSICAL CHARACTERISTICS	
<i>Dimensions</i>	Depth (Below Counter): 10.2 cm / 4.0 in Height (Above Counter): 13.0 cm / 5.1 in Length (By Model): Width: 29.2 cm / 11.5 in 9551 (Short, Scanner Only): 35.6 cm / 14.0 in 9553 (Medium, Scanner Only): 40.1 cm / 15.8 in 9555 (Long, Scanner Only): 50.8 cm / 20.0 in 9554 (Medium, Scanner/Scale): 40.1 cm / 15.8 in 9556 (Long, Scanner/Scale): 50.8 cm / 20.0 in
<i>Indicators</i>	Volume/Tone Visual: Good Read confirmation for all reading planes; Scale center of zero
READING PERFORMANCE	
<i>Image Capture</i>	Horizontal and Vertical Window: Graphic Formats: BMP, JPEG; Greyscale: 256, 16, 2
<i>Illumination</i>	Multiple Diffused LEDs: Orientation and wavelength optimized for eye comfort
<i>Reading Coverage</i>	Seamless reading of linear and 2D codes in all planes (5 sides plus Customer Service Scanner)
SAFETY & REGULATORY	
<i>Agency Approvals</i>	The product meets necessary safety and regulatory approvals for its intended use. The Quick Start Guide for this product can be referred to for a complete list of certifications.
<i>Environmental Compliance</i>	Complies to China RoHS; Complies to EU RoHS; Complies to R.E.A.C.H. - EC1907/2006
UTILITIES	
<i>Aladdin™ Utility</i>	Aladdin configuration software is available for download at no charge.
<i>OPOS / JavaPOS</i>	OPOS and JavaPOS utilities are available for download at o charge.
WARRANTY	
<i>Warranty</i>	1-Year Standard Factory Warranty



