

POS SOLUTIONS
2020 CATALOG





TABLE OF CONTENTS

POS Solutions Built for Your Business	5
Thermal Single-station Printing Solutions	6 – 7
Multifunction Solutions	8
Thermal Label Printers	9
Impact Printers	10
Check Scanners	11
Mobilink™ Wireless Receipt Printers	12
Media	13
OmniLink-i Printers	14
OmniLink-DT Printers	15
Kitchen Display System Controllers	16 – 17
OmniLink® Merchant Services	18
POS Displays	19
Connect-It™ Connectivity Interfaces	20
Interface Compatibility	21
Software	22 – 23

For more information, visit www.epson.com/pos



POS Solutions Built for Your Business

For over 30 years, Epson's advanced technology solutions have been at work in millions of point-of-service systems around the world. As an industry leader, Epson has maintained an ongoing commitment to innovation in POS technology. Dedicated to delivering an extraordinary value to our customers, we continue to explore open-architecture technologies that bring revolutionary functionality to the point of service and beyond.

The Epson® Advantage

Proven Leadership

A leader in receipt printing and check scanning products, Epson has sold over five million POS printers worldwide. As a trusted partner with top businesses in the world, we're committed to maintaining the highest standards of quality and reliability, while providing groundbreaking solutions that meet critical needs. In fact, Epson consistently ranks among the top companies for number of patents awarded.

Dedicated Technical Resource Team

At Epson, we're dedicated to working closely with our customers to provide a total solution. Our experts are available to work directly with each client for personalized design and development. And, we'll join with our partners of choice to create customized SKUs as needed.

Customized Solutions

Providing the product that works best for each client is a priority for Epson. That's why we offer product modifications as well as customized solutions in the following areas:

- Firmware and emulations
- Documentation
- Utilities
- Interfaces and drivers

Service and Support

Built to offer reliability you can count on, our products are backed by comprehensive service and support, including:

- ExpressCareSM
- Advanced service programs
- Spare-in-the-AirTM/extended warranty
- Advanced product support center

Commitment to the Environment

At Epson, we know that planning for the future requires a strong commitment to the environment. That is why we strive to create innovative products that are reliable, recyclable and energy efficient. Innovative products that use fewer resources help ensure a better future for us all.

THERMAL SINGLE-STATION PRINTING SOLUTIONS



Retail



Hospitality



Financial

Streamline your POS system with Epson's full line of industry-leading thermal printers. These full-featured printers are designed to offer maximum performance, best-in-class reliability, and the most versatile connectivity.

- Compatible with both traditional and mobile (iOS®, Android™ and Windows®) POS systems
- ePOS™ print technology for easy setup with iOS, Android and Windows mobile devices and Windows drivers for desktop PCs
- Includes ESC/POS®, OPOS and JavaPOS™ drivers
- Wireless setup with SimpleAP (wireless SKU only)
- Multiple interfaces — options include Serial, Parallel, USB, Ethernet, Wireless or Bluetooth®
- Low power consumption; many models are ENERGY STAR® qualified

OmniLink TM-T88VI Thermal Printer

- Supports a 2" and 3" media width
- Prints up to 350 mm/sec¹
- High-speed auto cutter
- Built-in USB and Ethernet, plus other options including wireless and Bluetooth
- Designed for the cloud, plus Beacon² and NFC³ for distributed printing
- Options to reduce paper usage up to 49 percent⁴
- Designed for high-volume use
- 4-year limited warranty



TM-T88V Thermal Printer

- Supports a 2" and 3" media width
- Prints up to 300 mm/sec
- Highly configurable with built-in USB + UIB (Connect-It modules)
- Options to reduce paper usage up to 30 percent⁴
- Designed for high-volume use
- 4-year limited warranty



TM-T70II Front-loading Thermal Printer

- Supports a 3" media width
- Prints up to 250 mm/sec
- Highly configurable with built-in USB + UIB (Connect-It modules)
- Front-facing controls and paper loading
- Sealed top for superior spill resistance
- 2-year limited warranty



TM-T20III Thermal Receipt Printer

- Affordable — thermal printer designed with the reliability and flexibility retailers need
- mPOS/tablet support — Epson ePOS SDK (iOS/Android) support on the Ethernet model; DHCP is enabled and automatically retrieves the printer IP address
- Prints up to 250 mm/sec
- Enhanced print options — reduce paper usage up to 30 percent⁴



1 Speed based on using 80 mm wide media only and Epson's PS-180 power supply. Configurations not including the PS-180 will have a default print speed of 300 mm/sec.
 2 Requires the use of a beacon dongle connected to TM-T88VI printer via the USB-A port. Supports only Apple® iBeacon™ compliant format. The Epson-approved dongle is Laird model BT820.

3 NFC tag requires use of a device that includes an NFC reader, and may require additional software.
 4 Paper savings depend on the text and graphics printed on the receipt.

THERMAL SINGLE-STATION PRINTING SOLUTIONS

Mobile POS Printing Reimagined

The TM-m printers give you the freedom to print from iOS, Android and Windows tablet and mobile devices, as well as desktop PCs, with easy setup and convenient connectivity. The first of their kind designed exclusively for today's advanced POS environments, these cutting-edge, single-station thermal receipt printers easily connect to traditional POS and mobile POS systems.

TM-m30 3" Receipt Printer

- Prints up to 200 mm/sec
- Flexible configuration (top load or front load), interchangeable by easily switching the outer plates
- Dual interface — options include USB, Ethernet, wireless, Bluetooth or NFC³ touch-to-print
- Wireless setup with SimpleAP (wireless SKU only)
- One power source for both your tablet and printer (BT charge SKU)
- Ideal for counter spaces (actual size 5" x 5" x 5")
- Available in both white and black
- 2-year limited warranty



Front load

TM-m10 2" Receipt Printer

- Prints up to 150 mm/sec
- Ideal for counter spaces (actual size 4" x 4" x 4")
- Flexible configuration (top load or front load), interchangeable by easily switching the outer plates
- Easy setup and versatile connectivity
- Available in both white and black
- 1-year limited warranty



Top load



MULTIFUNCTION SOLUTIONS



Financial



Retail

Multifunction printers from Epson deliver the functionality that demanding retailers require. With high-speed receipt and graphics printing, combined with fast check processing technology, these high-performance printers help increase productivity while maintaining remarkable accuracy and reliability.

- Fast check transaction speeds
- Meets ANSI X9, 100-1602-2009 MICR standards
- Includes ESC/POS, OPOS and JavaPOS drivers
- Supports a 3" receipt media width
- 2-year limited warranty

OmniLink TM-H6000V Hybrid Multifunction Printer

- Multi-interface connectivity with built-in Ethernet and USB
- Remote monitoring for the printer's status and parts life expectancy¹
- Intuitive control panel with visual error notifications
- Designed for the cloud — print from Web-based apps and utilize Service Direct Printing for online ordering
- Distributed proximity-based printing with Epson Beacon support² and NFC technologies³
- Receipt printing up to 350 mm/sec⁴; slip printing up to 5.7 lps



TM-H2000 Dual-function Printer with Check Processing

- Receipt printing up to 260 mm/sec
- High-resolution graphics with almost no processing delay
- Easy replacement for IBM® 4610 printers
- Drop-in paper loading, auto cutter and status LEDs



¹ Requires customization with third-party applications.

² Requires the use of a beacon dongle connected to TM-H6000V printer via the USB-A port. Supports only Apple iBeacon compliant format. The Epson-approved dongle is Laird model BT820.

³ NFC tag requires use of a device that includes an NFC reader, and may require additional software.

⁴ Speed based on using 80 mm wide media only and Epson's PS-180 power supply. Configurations not including the PS-180 will have a default print speed of 300 mm/sec.

THERMAL LABEL PRINTERS

Epson offers reliable and cost-effective label printers for applications where flexible labeling is required. Our compact, high-speed label printers deliver on-demand printing for a variety of label types — whenever and wherever you need them. And, they're backed by a 1-year limited warranty (TM-L90II LFC, TM-L90 Plus, TM-L500A).



TM-L90II LFC Thermal Label and Receipt Printer

- Label-taken sensor; prints one label at a time
- Back-feed capability; more efficient media use
- Ready-to-use labels help improve order accuracy
- One printer for liner-free labels and receipts



TM-L90 Plus Thermal Label and Receipt Printer

- Supports a 1.5", 2", or 3" media width
- Prints up to 150 mm/sec
- Compatible with leading business label software using Windows drivers
- High-quality thermal printing at a crisp 203 x 203 dpi for labels or receipts
- Linerless peeler and non-peeler models available
- Dual interfaces standard (USB plus UIB)



TM-L500A Baggage Tag and Boarding Pass Printer

- Handles fan-fold or roll media up to 7.25" in diameter
- Prints up to 250 mm/sec
- Supports AEA 2009 print commands and Windows via standard USB and Serial interfaces
- IATA CUSS/CUPPS compliant
- Designed for printing boarding passes and baggage tags



IMPACT PRINTERS



Retail



Financial

Designed to meet the real-world demands of high-volume back-office applications, Epson's compact 9-pin printers offer exceptional speed and reliability. With a strong combination of features, they help deliver increased productivity and a lower cost of ownership.

TM-U675 Impact Printer

- Supports a 3" media width
- Prints up to 5.14 lps
- Wider throat for smooth drop-in validation
- Receipt, slip and validation printing
- Accurate MICR reading
- Easy drop-in paper loading and 1-touch removal
- Superior slip handling with built-in forms stopper
- 1-year limited warranty



TM-U220 Impact Printer

- Supports 2", 2.75" or 3" media widths
- Prints up to 6 lps
- Prints directly from iOS, Android and Windows devices
- DHCP-enabled model available for easy IP/network configuration
- Supports 802.11 a/b/g/n with 2.4 GHz/5 GHz compatibility
- 2-color printing for highlighting offers or order exceptions
- Right-side-up printing for kitchen orders
- Three SKUs available — choose the one that best meets your needs (see epson.com for details)
- 2-year limited warranty



Many top financial institutions rely on Epson for solutions to help increase productivity, improve customer satisfaction and reduce costs. From receipt printing and validation to image payment and mobile solutions, we've leveraged our expertise in printing and imaging to deliver the value-added solutions that financial institutions require.



- Epson multifunction devices combine printing and scanning processes
- Optimal efficiency (while taking up minimal counter space)
- 2-year limited warranty

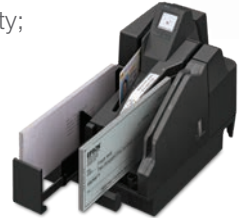
TM-S9000II Multifunction Teller Device

- LCD updates — easy access to function or maintenance status
- 100-check document feeder, scans up to 225 dpm
- Built-in inkjet printer — up to 16 lines of endorsement printing
- 2-sided ID scanning — easily capture color ID cards
- 2-year limited warranty



TM-S2000II Multifunction Teller Device

- Versatile — configuration flexibility; connect via USB
- LCD updates — easy access to function or maintenance status
- 100-check document feeder, scans up to 225 dpm
- Built-in inkjet printer — up to 16 lines of endorsement printing
- 2-sided ID scanning — easily capture color ID cards
- 2-year limited warranty



TM-S1000 Desktop Check Scanner

- Single-feed, 30, 60 and 90 dpm units available
- 100-check document feeder
- Double-check detection
- Flexible 2-pocket support
- Built-in franker
- Ideal for RDC, POS and back-counter applications



TM-S2000II/TM-T70II

- Multifunction device combined with front-loading thermal printer
- Supports check scanning
- MSR, plus configuration flexibility with receipt printer
- LCD updates — easy access to function or maintenance status
- 2-year limited warranty



PLQ-20 Passbook Printer

- 24-pin impact printer — passbooks up to 2.6 mm thick
- Easily fits on counters with limited space
- Prints at up to 480 cps
- MCBF of 7 million lines; MTBF of 10,000 power-on hours¹
- Printhead life of 400 million strokes per wire¹



TM-S2000II/OmniLink TM-T70II-DT2

- Multifunction device combined with front-loading thermal printer
- Thermal printer with integrated PC enables Ethernet connectivity
- MSR, plus receipt printing with paper-saving features
- LCD updates — easy access to function or maintenance status
- 2-year limited warranty



¹ Ratings are estimates only, based on normal use of the product, and are not warranted. Epson's only warranty for this product is contained in the standard limited warranty statement for this product.

MOBILINK WIRELESS RECEIPT PRINTERS



Retail



Hospitality



Healthcare



Financial

Deliver an enhanced customer experience with these portable POS printers from Epson. Fast and effective, these products add flexibility and ease to customer interactions with capabilities ranging from full-day operation to direct printing from tablets and mobile devices.

- mPOS friendly; compatible with iOS, Android and Windows mobile devices
- Includes ESC/POS, OPOS and JavaPOS drivers
- Supports 802.11 a/b/g/n with 2.4 GHz/5 GHz compatibility
- Cases, quad-battery and single-battery charging options available on select models
- 1-year limited warranty

Mobilink TM-P80 Plus Mobile Wireless Receipt Printer with Auto Cutter

- Supports a 3" media width
- Prints up to 100 mm/sec
- Operational battery life up to 33 hours (Bluetooth), up to 25 hours (wireless)¹
- Total weight: 1.4 lb/630 g
- 4-foot drop rating and IP4X environmental certified
- Includes wireless setup with SimpleAP (wireless SKU only)
- NFC touch-to-print functionality²
- Supports Bluetooth 3.0 (EDR supported)



Mobilink TM-P80 Mobile Wireless Receipt Printer

- Supports a 3" media width
- Prints up to 100 mm/sec
- Operational battery life up to 46 hours (Bluetooth), up to 25 hours (wireless)¹
- Total weight: 1.1 lb/500 g
- 4-foot drop rating and IP54 environmental certified
- CPCL emulations available
- Supports Bluetooth 2.1 (EDR supported)



Mobilink TM-P60II Mobile Wireless Receipt or Label Printer with Auto Cutter

- Supports a 2" media width
- Prints up to 100 mm/sec for receipts, 80 mm/sec for labels, 40 mm/sec in Peeler Mode
- Operational battery life up to 56 hours (Bluetooth), up to 34 hours (wireless)¹
- Total weight: 1.4 lb/630 g (receipt); 1.3 lb/600 g (label)
- 4-foot drop rating and IP54 environmental certified
- Zebra® emulation available for label applications
- Supports Bluetooth 2.1 (EDR supported)



Mobilink TM-P20 Mobile Wireless Receipt Printer

- Supports a 2" media width
- Prints up to 100 mm/sec
- Operational battery life up to 26 hours (Bluetooth), up to 16 hours (wireless)¹
- Total weight: 0.5 lb/228 g
- 6.5-foot drop rating and IP54-ready with padded case
- Supports Bluetooth 3.0 (EDR supported)
- Ultra compact and lightweight



¹ Battery life can vary significantly depending on usage.

² NFC tag requires use of a device that includes an NFC reader, and may require additional software.

Epson Tested Media

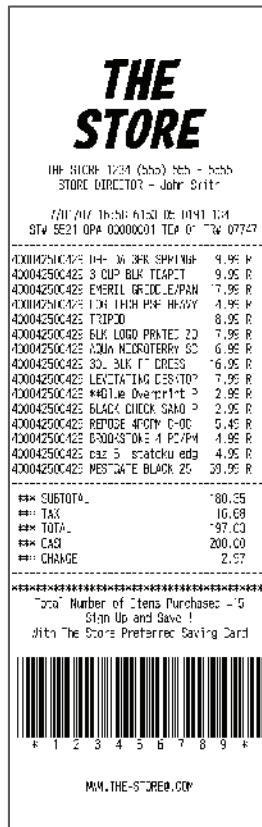
In order to prolong the life of the printhead in your Epson thermal printer, please only use Epson Tested Media¹. Other media has been known to damage the printhead over time, and damage from use of untested media is not covered under the warranty.

To view a full list of Epson Tested Media for thermal receipt printers, please visit: <https://epson.com/testedmedia>

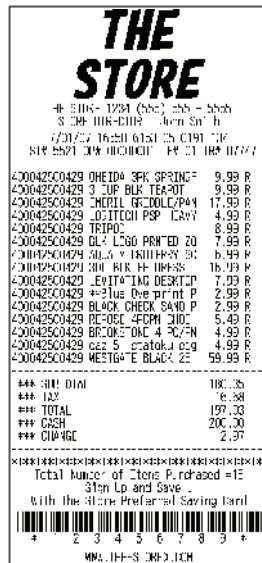
Paper-saving Technology

Epson's POS printers offer innovative technology that reduces overall paper usage. The settings are easy to navigate and can be used right out of the box². Epson printers achieve compression by reducing white space, adjusting margins so that readability and font sizes are not affected. Character height is reduced as well in the case of the TM-T88VI.

- Reduce paper usage up to 49 percent³
- Reduce white space between lines
- Reduce top and bottom margins



Normal size receipt



Save up to 30% with the m30 and T20III products



Save up to 47% with the H6000V and L90II LFC products



Save up to 49% with the T88VI product

1 Proper use of tested media is consistent with the printer warranty, but damage from use of non-tested media is not covered by the printer warranty. Epson's statements about tested media are not warranties of the media, tested or otherwise, and tested media are not Epson products or warranted by Epson. See <https://epson.com/testedmedia> for more information on Tested Media.

2 Even greater paper savings can be made with an application software adjustment.

3 Paper savings depend on the text and graphics printed on the receipt.

OMNILINK SMART SOLUTIONS — OMNILINK-i PRINTERS



Retail



Hospitality



Healthcare

Epson's OmniLink smart solutions, featuring Epson's industry-leading POS printers with built-in intelligence, offer open-platform mobility, peripheral connectivity via ePOS-Device, access to OmniLink Merchant Services, PC computing power and more, for a broad range of applications — all in a small footprint.

- Combine an industry-leading Epson printer with built-in intelligence for mobile POS deployments, cloud-based services, kitchen display systems (KDS) and more
- Provide the power to drive Web-based POS and information display applications
- Add cloud services without the need for legacy POS integration
- Options to reduce paper usage up to 49 percent¹

OmniLink TM-T88VI-i Thermal Printer

- Supports a 3" media width
- Prints up to 350 mm/sec²
- Beacon³, wireless, and NFC⁴ compatible
- 4 USB ports and 1 Serial port provide connectivity for up to 5 devices
- Support for handheld scanners, scales, 2" x 20" customer displays, MSRs and more
- 3-year limited warranty



OmniLink TM-U220-i Impact Printer

- Supports 2", 2.75" or 3" media widths
- Prints up to 6 lps
- Supports 802.11 a/b/g/n with 2.4 GHz/5 GHz compatibility
- 2-color printing for highlighting offers or order exceptions
- Right-side-up printing for kitchen orders
- 2-year limited warranty



OmniLink TM-T88V-i Thermal Printer

- Supports a 3" media width
- Prints up to 300 mm/sec
- Support for handheld scanners, scales, 2" x 20" customer displays, wedge magnetic stripe readers and more
- 4 USB ports and 1 Serial port provide connectivity for up to 5 devices
- 3-year limited warranty



OmniLink TM-T70-i Thermal Printer

- Supports a 3" media width
- Prints up to 170 mm/sec
- 4 USB ports for peripherals and video output
- 3-year limited warranty



OmniLink TM-T20II-i Thermal Printer

- Supports a 3" media width
- Prints up to 200 mm/sec
- Accommodates up to 3 devices: 2 USB, 1 Serial
- Support for handheld scanners, scales, 2" x 20" customer displays, wedge magnetic stripe readers and more
- 2-year limited warranty



1 Paper savings depend on the text and graphics printed on the receipt.
2 Speed based on using 80 mm wide media only and Epson's PS-180 power supply. Configurations not including the PS-180 will have a default print speed of 300 mm/sec.

3 Requires the use of a beacon dongle connected to TM-T88VI printer via the USB-A port. Supports only Apple iBeacon compliant format. The Epson-approved dongle is Laird model BT820.

4 NFC tag requires use of a device that includes an NFC reader, and may require additional software.

OMNILINK-DT PRINTERS

- POS system with maximum computing power and configuration flexibility
- Retail-hardened PC with a POSReady 7, POSReady 2009 or Linux® operating system powered by an Intel Atom processor
- Epson's unique ePOS-Print technology for browser-based printing
- Ultra small footprint ideal for mobile, Web-based and standalone POS and kiosk applications
- Fully integrated printer with built-in Thin Client to support network-centric infrastructures
- Supports a 3" media width
- 3-year limited warranty



Retail



Hospitality



Financial

OmniLink TM-T88VI-DT2 Printer

- All-in-one thermal POS printer with integrated PC
- Windows 10 or Linux OS
- Takes up to 70 percent less countertop space¹
- Intel processor; multiple POS configurations
- Storage options (32GB, 64GB, 128GB, 256GB)
- Fast receipt printing up to 350 mm/sec and high-speed auto cutter



OmniLink TM-T88V-DT Printer

- Prints up to 300 mm/sec
- POSReady 7, and POSReady 2009 or Linux OS
- Includes multiple USB ports and a built-in VGA for POS peripheral connectivity



OmniLink TM-T70II-DT2 Printer

- All-in-one thermal POS printer with integrated PC
- Windows 10 or Linux OS
- Takes up to 70 percent less countertop space¹
- Front-facing controls and receipt printing
- Intel processor; multiple POS configurations
- Storage options (32GB, 64GB, 128GB, 256GB)
- Fast receipt printing up to 250 mm/sec



¹ Based on W x D x H dimensions of POS systems; Toshiba Sure POS 500 models; Toshiba TCx models 360/370/380/740/780; Dell Optiplex 9020 – (MT).

KITCHEN DISPLAY SYSTEM (KDS) CONTROLLERS



Food Service



Hospitality

These two KDS controller solutions each feature one of the three printers — the TM-T88V-i, the perfect choice for a receipt or front counter printer, the TM-U220-i, ideal for backup printing in the kitchen, or the TM-L90 Plus-i, to improve the overall workflow by printing liner-free labels for drive-through, to-go or online orders. Simply put, these devices parse the POS order data routed to them and graphically drive it to the kitchen display for viewing and bumping. Complementary to your existing POS system — no modifications are needed.

Single-Station KDS Controller

The Epson Single-Station KDS Controller connects directly to your display and bump bar (sold separately) — via a VGA port and USB, respectively. This solution includes the software needed with no recurring software licensing fees to pay.

TM-U220-i-VGA, TM-T88V-i-VGA and TM-L90 Plus-i-VGA

- Built-in processing power and memory for greater flexibility and infrastructure efficiency
- Integrated printer can also print receipts or chits and directly drive KDS
- Smaller than many standalone kitchen/video display controllers and printers
- Built-in peripheral support:
2 USB ports (TM-L90 Plus-i-VGA and TM-U220-i-VGA), 4 USB ports (TM-T88V-i-VGA), as well as Ethernet connectivity
- VGA output directly drives kitchen/video displays

SINGLE-STATION KDS CONTROLLER



TM-U220-i-VGA



TM-T88V-i-VGA



TM-L90 Plus-i-VGA

(VGA, Ethernet, USB)



TM-U220-i-VGA (or TM-L90 Plus-i-VGA
or TM-T88V-i-VGA) KDS Controller

KITCHEN DISPLAY SYSTEM CONTROLLERS

Multi-Station KDS Controller

Designed for scale, the Epson Multi-Station KDS Controller allows you to add up to nine stations with convenient KDS expansion modules.



Food Service

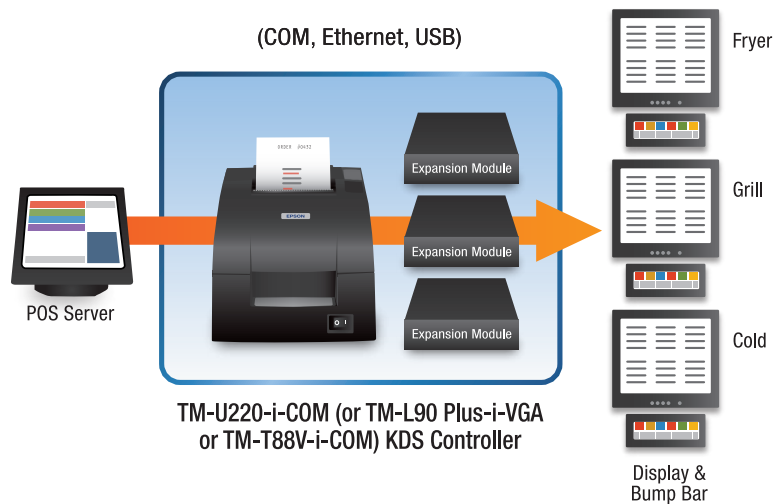


Hospitality

TM-U220-i-COM, TM-T88V-i-COM and TM-L90 Plus-i-VGA

- Built to grow with your business — add up to nine stations via KDS expansion modules connected to the KDS controller network
- Multi-station deployment costs include an integrated printer
- Automatically reroutes orders if one station goes down
- Customer-facing order status display
- Sound notification when order appears on screen at station
- Fully compatible with widescreen HD displays, single-point touchscreen* and USB bump bars
- Built-in peripheral support with 2 USB ports, 1 Serial port, as well as Ethernet connectivity (Serial connectivity applies to COM models)

MULTI-STATION KDS ARCHITECTURE



*Also supported by Direct-Connect.

OMNILINK MERCHANT SERVICES

Optimized for fast deployment and easy system integration across multiple merchant locations, OmniLink Merchant Services (OMS) provides access to cloud service applications. This innovative point-of-sale-agnostic solution comes equipped with a variety of tools for quick configuration and features a single online portal for easy data access. Offering billing and operations management utilities, reporting and more, OMS supplies the resources needed to provide customers with a new level of service and support. These resources can turn transactional data into opportunities and pennies into dollars.

Web-based services include:

- Labor management
- Analytics
- Coupons
- SMS and marketing
- Loyalty programs
- Digital receipts

HOW IT WORKS

SEND

Epson OMS-enabled printer extracts data from receipts and sends it to the OMS cloud



1

CAPTURE

ISVs analyze data from the OMS cloud



2

UTILIZE

Business owners can use that data to help generate revenue, control costs and improve overall efficiencies



3

MANAGE

ISVs deliver critical data to business owners



Space-saving and Reliable

Displays connect directly to Epson OmniLink and TM Series printers and feature fast data transfer rates, easy-to-read information and wide viewing angles.

DM-D30 Customer Display

- Compact customer display
- 20-column x 2-line dot matrix
- USB Bus powered
- Wide range of viewing angles
- USB port for wireless module
- Available in both white and black



DM-D110 Customer Display

- Compact customer display
- 20-column x 2-line dot matrix
- Wide range of viewing angles
- Data transfer at 115,200 bps



DM-D210 Customer Display

- Medium-sized customer pole display
- 20-column x 2-line dot matrix
- Wide range of viewing angles
- Data transfer at 115,200 bps



DM-D110 Pole Display Kit

- All-in-one pole display kit with all accessories
- DM-D110 customer display
- Direct host connection



DM-D500 Customer Display

- High-performance customer display
- Large 42-column x 8-line dot matrix
- Support for text, graphics and logos
- Vertical/horizontal scrolling
- Data transfer at 115,200 bps



CONNECT-IT CONNECTIVITY INTERFACES

Epson offers the ultimate in flexibility and connectivity options with our exclusive Connect-It family of interfaces. By installing a simple interface board, retailers can bring advanced printer functions to their POS systems, including legacy, PC-based, and mobile POS systems, and postpone costly system upgrades. Epson Connect-It interfaces include USB, Powered USB, wireless (802.11n), Serial, Parallel, Ethernet and more.

Connect-It 802.11n Wireless Interface (UB-R04)

- Remote printing at distances up to 328 feet
- Advanced security for secure data transmissions
- Dual-band frequency, 2.4 GHz/5 GHz speeds up to 64 Mbps



Connect-It Parallel Interface (UB-P02II)

- Standard Centronics 36-pin connector
- IEEE-1284 compliant
- Bi-directional communication



Connect-It Ethernet Interface (UB-E04)

- Multiple interface and configuration options
- ePOS Print Service — enables printing from mobile, Web- and cloud-based POS applications
- Built-in USB port — supports wireless adapter connectivity firmware
- Standard TCP/IP protocol



Connect-It USB Interface

- Multiple models available
- Port capacity up to 127/USB controller
- 1- or 2-port hub options
- Speeds up to 12 Mbps



Connect-It Serial RS-232 Interface

- Multiple Serial modules available
- Distances up to 49 feet between printer and host
- Option of audible alarm/ electronic journal
- Speeds from 2,400 bps to 19,200 bps



OT-WL02 Single-band USB Wireless Adapter

- 2.4 GHz frequency band
- 802.11 b/g/n
- Wireless encryption: WEP (64/128-bit), WPA-PSK, WPA2-PSK, WPA2-Enterprise
- FCC Class B and ICES-003 Class B



OT-WL06 Dual-band USB Wireless Adapter

- 2.4 or 5 GHz frequency band
- 802.11 a/b/g/n/ac
- Wireless encryption: WEP (64/128-bit), WPA-PSK, WPA2-PSK, WPA2-Enterprise
- Compatible with TM-m30 and TM-T88VI
- FCC Class B and ICES-003 Class B



Cloud Interface Card UB-IU01C

- Allows traditional POS printer to function as a gateway to send transaction data to the cloud
- Enables users to access OmniLink Merchant Services
- Customization available to support partner agents



INTERFACE COMPATIBILITY

Wireless USB Networking Adapters

Connectivity Option	Part Number	Description	Works With
UB-R04	C32C824617	Wireless Interface	H2000, H6000IV, L90 Plus, L90 Plus LFC, L90 Plus Peeler, T70, T70II, T88IV, T88V, T88VI, U220 and T20II
UB-E04	C32C881008	Ethernet Interface	H2000, H6000IV, L90 Plus, L90 Plus LFC, L90 Plus Peeler, L90II LFC, T70II, T88IV, T88V, U220 and T20II
UB-S01	C823361	Serial Interface	H5000II, U325, U590, U675, H6000IV, H6000V, H2000, L90 Plus, L90II LFC, L90 Plus LFC, L90 Plus Peeler, L90II LFC, T70, T70II, T88IV, T88V, T88VI, U220 and T20II
UB-S09	C823361	Serial 9-Pin Interface	H5000II, U590, U675, H6000II, H2000, H6000IV, H6000V, L90 Plus, L90II LFC, L90 Plus LFC, L90 Plus Peeler, T70, T70II, T88IV, T88V, T88VI, U220 and T20II
UB-P02II	209150900	Parallel Interface	H5000II, U325, U590, U675, H2000, H6000IV, H6000V, L90 Plus, L90II LFC, L90 Plus LFC, L90 Plus Peeler, T70, T70II, T88IV, T88V, T88VI, T20III and U220
UB-U01	C32C824111	USB Interface Board with Hub and DM-D Port	H5000II, U325, U590, U675, H2000, H6000IV, H6000V, L90 Plus, L90 Plus LFC, L90 Plus Peeler, T70, T70II, T88IV, T88V, T88VI and U220
UB-U02	C32C824121	USB Interface; + DM-D Port; No Hub	H5000II, U325, U590, U675, H2000, H6000IV, H6000V, L90 Plus, L90 Plus LFC, L90 Plus Peeler, T70, T70II, T88IV, T88V, T88VI and U220
UB-U03	C32C824131	USB Interface Board; No Hub; + DM-D Port	H5000II, U325, U590, U675, H2000, H6000IV, L90 Plus, L90 Plus LFC, L90 Plus Peeler, T70, T70II, T88IV, T88V and U220
UB-U04	C32C823950	Powered USB; No Hub; No DM-D Port	H5000II, U590, U675, H6000II and U220
UB-U05	C32C823991	USB Interface Board; No Hub; + DM-D Port	H2000, H6000IV, T70, T88IV and T88V
UB-U06	C32C824071	Powered USB; No Hub; No DM-D	H2000, H6000IV, H6000V, L90 Plus, L90II LFC, L90 Plus LFC, L90 Plus Peeler, T70, T70II, T88IV, T88V and T88VI
UB-U09	C823893	USB + Serial D-Sub 9-Pin Interface	H5000II, U325, U590, U675, H2000, H6000IV, L90 Plus, L90 Plus LFC, L90 Plus Peeler, T70, T70II, T88IV, T88V and U220
UB-U19	C32C824092	USB with 9-Pin Serial Interface	H2000, H6000IV, T70, T88IV and T88V
UB-IU01C	C31CA85A5961	Cloud Card	T88V and T88IV

Wireless USB Networking Adapters

Connectivity Option	Model	Part Number
USB Wireless (2.4 GHz/5 GHz)	OT-WL06	C32C891321
USB Wireless (2.4 GHz/5 GHz)	OT-WL05	C32C890737
USB Wireless (2.4 GHz)	OT-WL02	C32C890738

Please contact your Epson representative for additional connectivity options.

Wireless Dongle Compatibility

	OT-WL01 (single band 2.4 GHz)	OT-WL02 (single band 2.4 GHz)	OT-WL05 (dual band 2.4/5 GHz)	OT-WL06 (dual band 2.4/5 GHz)
m10	•	•	—	•
m30	—	•	•	•
T88VI, T88VI-i	—	•	•	•
H6000V	—	•	•	•
T20II Ethernet Plus	—	•	—	—
T88V-i, T20II-i, U220-i, L90 Plus-i and DT products	•	—	—	—
TM printers with E04 (Ethernet) boards	•	•	—	•
T20III	—	—	—	•



SOFTWARE

Epson's team of technical experts, by working closely with each of our customers, is able to provide a complete solution, including personalized design and development. And, we'll join with our partners of choice to create customized SKUs as needed.

	Thermal Single-station Printers						Multi-function Solutions		Thermal Label Printers		Impact Printers		Check Scanners			Mobile Printers				OmniLink-i Printers				OmniLink-DT Printers					
	TM-T88VI	TM-T88V	TM-T70II	TM-T20III	TM-m30	TM-m10	TM-H6000V	TM-H2000	TM-L90II LFC Thermal & Receipt Printer	TM-L90 Plus Thermal & Receipt Printer	TM-L500A	TM-U675	TM-U220	TM-S9000II	TM-S2000II	TM-S1000	PLQ-20	Mobilink TM-P80 Plus	Mobilink TM-P80	Mobilink TM-P60II	Mobilink TM-P20	OmniLink TM-T88VI-i	OmniLink TM-U220-i	OmniLink TM-T88V-i	OmniLink TM-T70-i	OmniLink TM-T20II-i	OmniLink TM-T88VI-DT2	OmniLink TM-T88V-DT	OmniLink TM-T70II-DT2
Advanced Printer Driver (APD)																													
Windows Embedded POS Ready 7 (32-bit, 64-bit)	•	•	•	•	•	•	•	•	•	•	•	•	•	•	•		•	•	•	•	•	•	•	•	•	•			
Windows Embedded Standard 7 (32-bit, 64-bit)	•	•	•	•	•	•	•	•	•	•	•	•	•	•	•		•	•	•	•	•	•	•	•	•	•			
Windows 7 SP1 (32-bit, 64-bit)	•	•	•	•	•	•	•	•	•	•	•	•	•	•	•		•	•	•	•	•	•	•	•	•	•			
Windows Embedded 8.1 Industry	•	•	•	•	•	•	•	•	•	•	•	•	•	•	•		•	•	•	•	•	•	•	•	•	•			
Windows 8 (32-bit, 64-bit)	•	•	•	•	•	•	•	•	•	•	•	•	•	•	•		•	•	•	•	•	•	•	•	•	•			
Windows 8.1 (32-bit, 64-bit)	•	•	•	•	•	•	•	•	•	•	•	•	•	•	•		•	•	•	•	•	•	•	•	•	•			
Windows 10 (32-bit, 64-bit)	•	•	•	•	•	•	•	•	•	•	•	•	•	•	•		•	•	•	•	•	•	•	•	•	•			
Windows Server® 2008 R2	•	•	•	•	•	•	•	•	•	•	•	•	•	•	•		•	•	•	•	•	•	•	•	•	•			
Windows Server 2012	•	•	•	•	•	•	•	•	•	•	•	•	•	•	•		•	•	•	•	•	•	•	•	•	•			
Windows Server 2012 R2	•	•	•	•	•	•	•	•	•	•	•	•	•	•	•		•	•	•	•	•	•	•	•	•	•			
Windows Server 2016	•	•	•	•	•	•	•	•	•	•	•	•	•	•	•		•	•	•	•	•	•	•	•	•	•			
Windows Server 2016	•	•	•	•	•	•	•	•	•	•	•	•	•	•	•		•	•	•	•	•	•	•	•	•	•			
TM/BA Series Printer Driver for Linux																													
Red Hat® Enterprise Linux 6.4/6.5	•	•	•	•	•	•	•	•			•	•																	
openSUSE 11.1/12.2/13.1	•	•	•	•	•	•	•	•			•	•																	
Ubuntu® 9.04/12.04 LTS/14.04 LTS	•	•	•	•	•	•	•	•			•	•																	
TM Mac® Printer Driver																													
Mac OS X® 10.10.5 (Inter 64-bit)	•	•	•	•	•	•																							
Mac OS X 10.11 (Inter 64-bit)	•	•	•	•	•	•																							
macOS® 10.12 (Inter 64-bit)	•	•	•	•	•	•																							
macOS 10.13 (Inter 64-bit)	•	•	•	•	•	•																							
macOS 10.14 (Inter 64-bit)	•	•	•	•	•	•																							
OPOS Driver																													
Windows Embedded Standard 7 (32-bit, 64-bit)	•	•	•	•	•	•	•	•	•	•	•	•	•	•	•		•	•	•	•	•	•	•	•	•	•			
Windows Embedded POS Ready 7 (32-bit, 64-bit)	•	•	•	•	•	•	•	•	•	•	•	•	•	•	•		•	•	•	•	•	•	•	•	•	•			
Windows 7 SP1 (32-bit, 64-bit)	•	•	•	•	•	•	•	•	•	•	•	•	•	•	•		•	•	•	•	•	•	•	•	•	•			
Windows 8 (32-bit, 64-bit)	•	•	•	•	•	•	•	•	•	•	•	•	•	•	•		•	•	•	•	•	•	•	•	•	•			
Windows 8.1 (32-bit, 64-bit)	•	•	•	•	•	•	•	•	•	•	•	•	•	•	•		•	•	•	•	•	•	•	•	•	•			
Windows 10 (32-bit, 64-bit)	•	•	•	•	•	•	•	•	•	•	•	•	•	•	•		•	•	•	•	•	•	•	•	•	•			
Windows Server 2008 (32-bit, 64-bit)	•	•	•	•	•	•	•	•	•	•	•	•	•	•	•		•	•	•	•	•	•	•	•	•	•			
Windows Server 2008 R2	•	•	•	•	•	•	•	•	•	•	•	•	•	•	•		•	•	•	•	•	•	•	•	•	•			
Windows Server 2012	•	•	•	•	•	•	•	•	•	•	•	•	•	•	•		•	•	•	•	•	•	•	•	•	•			
Windows Server 2012 R2	•	•	•	•	•	•	•	•	•	•	•	•	•	•	•		•	•	•	•	•	•	•	•	•	•			
Windows Server 2016	•	•	•	•	•	•	•	•	•	•	•	•	•	•	•		•	•	•	•	•	•	•	•	•	•			
Windows Server 2019	•	•	•	•	•	•	•	•	•	•	•	•	•	•	•		•	•	•	•	•	•	•	•	•	•			



Epson Business Solutions

Epson is a leading provider of innovative technology solutions that help businesses succeed. We partner with you to best meet your specific needs, focusing on:

- Improved productivity
- World-class customer service and support
- Cost-effective, high-quality solutions
- A commitment to the environment

Discover how Epson can help you work toward the future. www.epson.com/forbusiness

Epson America, Inc.
3840 Kilroy Airport Way, Long Beach, CA 90806

Epson Canada Limited
185 Renfrew Drive, Markham, Ontario L3R 6G3

www.epson.com
www.epson.ca

Better Products for a Better Future™
eco.epson.com

Specifications and terms are subject to change without notice. EPSON and ESC/POS are registered trademarks, EPSON Exceed Your Vision is a registered logomark and Better Products for a Better Future is a trademark of Seiko Epson Corporation. OmniLink is a registered trademark, Connect-It, ePOS, Mobilink and Spare-in-the-Air are trademarks and ExpressCare is a service mark of Epson America, Inc. Apple, Mac, macOS, OS X and Safari are trademarks of Apple Inc., registered in the U.S. and other countries. iBeacon is a trademark of Apple Inc. Android and Google Chrome are trademarks of Google LLC. Microsoft, Windows, Window Server and Windows Vista are either registered trademarks or trademarks of Microsoft Corporation in the United States and/or other countries. All other product and brand names are trademarks and/or registered trademarks of their respective companies. Epson disclaims any and all rights in these marks. Copyright 2020 Epson America, Inc. CPD-52076R3 1/20